

ROBO2 RABBIT PAB

Cat.#: S220863

Product Name: Anti-ROBO2 Rabbit Polyclonal Antibody

Synonyms: SAX3

UNIPROT ID: Q9HCK4 (Gene Accession - NP_001122401)

Background: The protein encoded by this gene belongs to the ROBO family, part of the immunoglobulin superfamily of proteins that are highly conserved from fly to human. The encoded protein is a transmembrane receptor for the slit homolog 2 protein and functions in axon guidance and cell migration. Mutations in this gene are associated with vesicoureteral reflux characterized by the backward flow of urine from the bladder into the ureters or the kidney. Alternative splicing results in multiple transcript variants.

Immunogen: Synthetic peptide of human ROBO2

Applications: ELISA, IHC

Recommended Dilutions: IHC: 25-100; ELISA: 1000-2000

Host Species: Rabbit

Clonality: Rabbit Polyclonal

Isotype: Immunogen-specific rabbit IgG

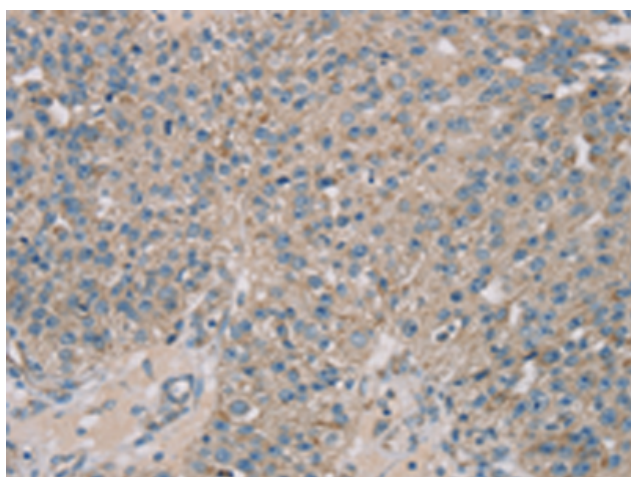
Purification: Antigen affinity purification

Species Reactivity: Human

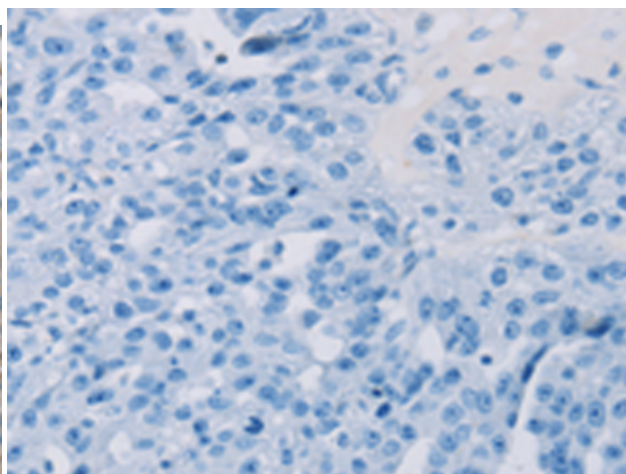
Constituents: PBS (without Mg²⁺ and Ca²⁺), pH 7.4, 150 mM NaCl, 0.05% Sodium Azide and 40% glycerol

Research Areas: Neuroscience

Storage & Shipping: Store at -20°C. Avoid repeated freezing and thawing



Immunohistochemistry analysis of paraffin embedded Human breast cancer tissue using 220863(ROBO2 Antibody) at a dilution of 1/30(Cytoplasm or Cell membrane).



In comparison with the IHC on the left, the same paraffin-embedded Human breast cancer tissue is first treated with the synthetic peptide and then with 220863(Anti-ROBO2 Antibody) at dilution 1/30.