

RNF24 RABBIT PAB

Cat.#: S218969

Product Name: Anti-RNF24 Rabbit Polyclonal Antibody

Synonyms: GIL

UNIPROT ID: Q9Y225 (Gene Accession - BC000213)

Background: This gene encodes an integral membrane protein that contains a RING-type zinc finger. The encoded protein may interact with multiple transient receptor potential cation channel subfamily C (TRPC) proteins and regulate the trafficking and insertion of these proteins into the plasma membrane.

Immunogen: Fusion protein of human RNF24

Applications: ELISA, WB, IHC

Recommended Dilutions: IHC: 20-100;WB: 200-1000;ELISA: 5000-10000

Host Species: Rabbit

Clonality: Rabbit Polyclonal

Isotype: Immunogen-specific rabbit IgG

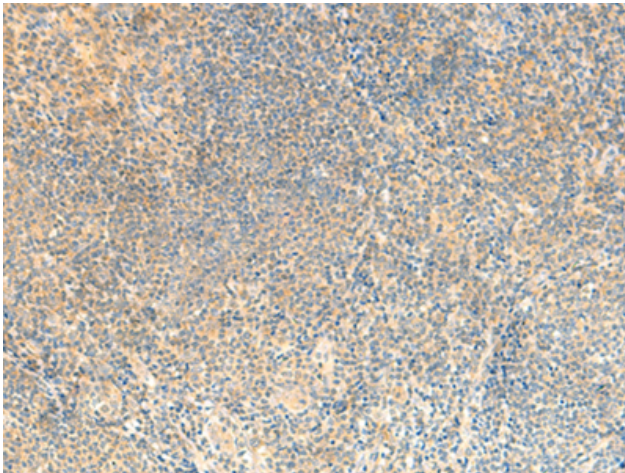
Purification: Antigen affinity purification

Species Reactivity: Human, Mouse

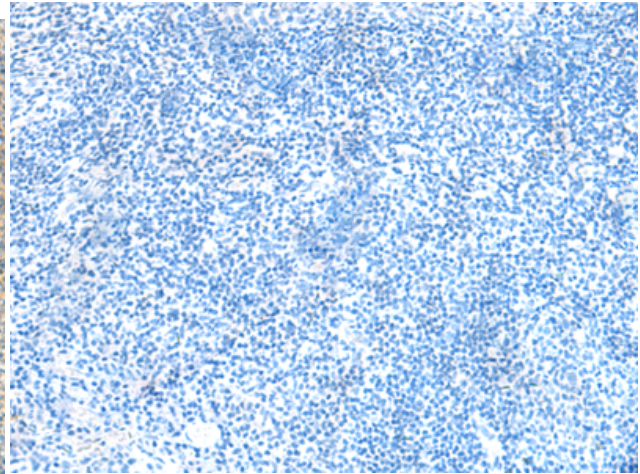
Constituents: PBS (without Mg²⁺ and Ca²⁺), pH 7.4, 150 mM NaCl, 0.05% Sodium Azide and 40% glycerol

Research Areas: Epigenetics and Nuclear Signaling, Cell Biology

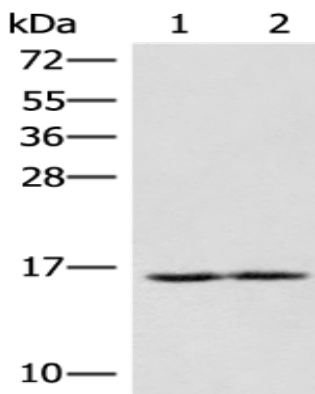
Storage & Shipping: Store at -20°C. Avoid repeated freezing and thawing



Immunohistochemistry analysis of paraffin embedded Human tonsil tissue using 218969(RNF24 Antibody) at a dilution of 1/25(Cytoplasm).



In comparison with the IHC on the left, the same paraffin-embedded Human tonsil tissue is first treated with the fusion protein and then with 218969(Anti-RNF24 Antibody) at dilution 1/25.



Gel: 12%SDS-PAGE, Lysate: 40 µg;
Lane 1-2: K562 and HL60 cell lysates;
Primary antibody: 218969(RNF24 Antibody) at dilution 1/250;
Secondary antibody: Goat anti rabbit IgG at 1/8000 dilution;
Exposure time: 30 seconds