

RNF214 RABBIT PAB

Cat.#: S217776

Product Name: Anti-RNF214 Rabbit Polyclonal Antibody

Synonyms:

UNIPROT ID: Q8ND24 (Gene Accession - BC064581)

Background: RNF214 (RING finger protein 214) is a 703 amino acid protein that contains one RING-type zinc finger and is encoded by a gene that maps to human chromosome 11q23.3. Chromosome 11 houses over 1,400 genes and comprises nearly 4% of the human genome. Jervell and Lange-Nielsen syndrome, Jacobsen syndrome, Niemann-Pick disease, hereditary angioedema and Smith-Lemli-Opitz syndrome are associated with defects in genes that maps to chromosome 11.

Immunogen: Fusion protein of human RNF214

Applications: ELISA, WB, IHC

Recommended Dilutions: IHC: Oct-50;WB: 500-2000;ELISA: 2000-5000

Host Species: Rabbit

Clonality: Rabbit Polyclonal

Isotype: Immunogen-specific rabbit IgG

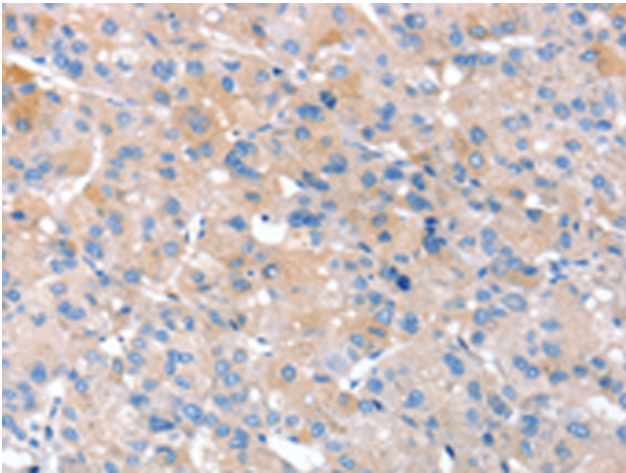
Purification: Antigen affinity purification

Species Reactivity: Human, Mouse

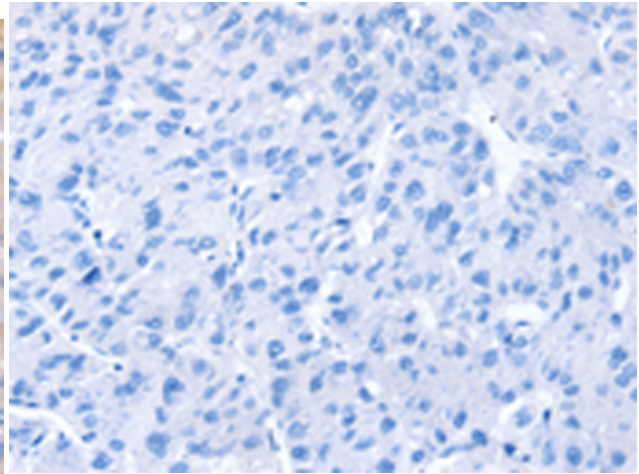
Constituents: PBS (without Mg²⁺ and Ca²⁺), pH 7.4, 150 mM NaCl, 0.05% Sodium Azide and 40% glycerol

Research Areas: Cell Biology

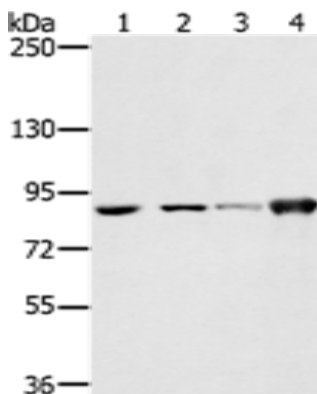
Storage & Shipping: Store at -20°C. Avoid repeated freezing and thawing



Immunohistochemistry analysis of paraffin embedded Human liver cancer tissue using 217776(RNF214 Antibody) at a dilution of 1/20(Cytoplasm).



In comparison with the IHC on the left, the same paraffin-embedded Human liver cancer tissue is first treated with the fusion protein and then with 217776(Anti-RNF214 Antibody) at dilution 1/20.



Gel: 6%SDS-PAGE, Lysate: 40 μ g;
Lane 1-4: 823 cells, PC3 cells, 231 cells, hepg2 cells;
Primary antibody: 217776(RNF214 Antibody) at dilution 1/250;
Secondary antibody: Goat anti rabbit IgG at 1/8000 dilution;
Exposure time: 20 seconds