

RNF208 RABBIT PAB

Cat.#: S219233

Product Name: Anti-RNF208 Rabbit Polyclonal Antibody

Synonyms:

UNIPROT ID: Q9H0X6 (Gene Accession - BC016958)

Background: The function of this protein remains unknown.

Immunogen: Fusion protein of human RNF208

Applications: ELISA, WB, IHC

Recommended Dilutions: IHC: 50-100;WB: 200-1000;ELISA: 5000-10000

Host Species: Rabbit

Clonality: Rabbit Polyclonal

Isotype: Immunogen-specific rabbit IgG

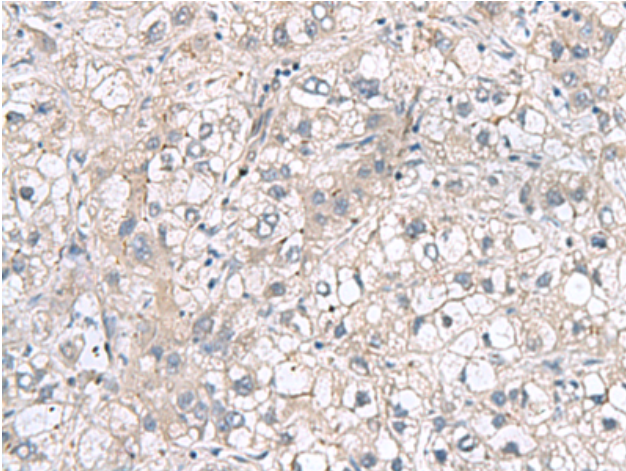
Purification: Antigen affinity purification

Species Reactivity: Human, Mouse

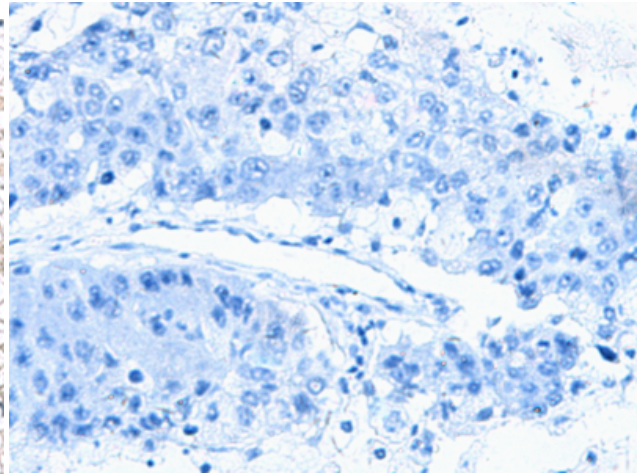
Constituents: PBS (without Mg²⁺ and Ca²⁺), pH 7.4, 150 mM NaCl, 0.05% Sodium Azide and 40% glycerol

Research Areas: Epigenetics and Nuclear Signaling

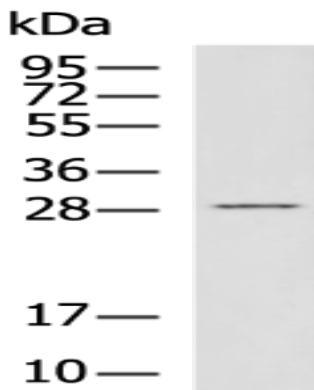
Storage & Shipping: Store at -20°C. Avoid repeated freezing and thawing



Immunohistochemistry analysis of paraffin embedded Human liver cancer tissue using 219233(RNF208 Antibody) at a dilution of 1/65(Cytoplasm).



In comparison with the IHC on the left, the same paraffin-embedded Human liver cancer tissue is first treated with the fusion protein and then with 219233(Anti-RNF208 Antibody) at dilution 1/65.



Gel: 12%SDS-PAGE, Lysate: 40 μ g;
Lane: MCF7 cell lysate;
Primary antibody: 219233(RNF208 Antibody) at dilution 1/400;
Secondary antibody: HRP-conjugated Goat anti rabbit IgG at 1/5000 dilution;
Exposure time: 2 minutes