

RNF20 RABBIT PAB

Cat.#: S217770

Product Name: Anti-RNF20 Rabbit Polyclonal Antibody

Synonyms: BRE1; BRE1A; hBRE1

UNIPROT ID: Q5VTR2 (Gene Accession - BC110585)

Background: The protein encoded by this gene shares similarity with BRE1 of *S. cerevisiae*. The protein encoded by this human gene is an E3 ubiquitin ligase that regulates chromosome structure by monoubiquitinating histone H2B. This protein acts as a putative tumor suppressor and positively regulates the p53 tumor suppressor as well as numerous histone H2A and H2B genes. In contrast, this protein also suppresses the expression of several protooncogenes and growth-related genes, including many genes that are induced by epidermal growth factor.

Immunogen: Fusion protein of human RNF20

Applications: ELISA, WB, IHC

Recommended Dilutions: IHC: 20-100;WB: 1000-5000;ELISA: 2000-10000

Host Species: Rabbit

Clonality: Rabbit Polyclonal

Isotype: Immunogen-specific rabbit IgG

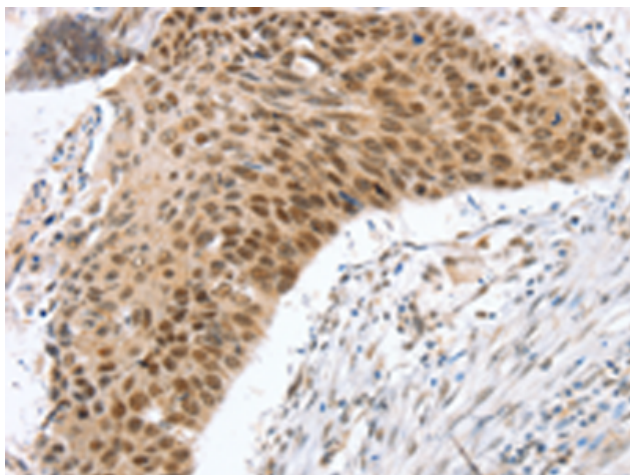
Purification: Antigen affinity purification

Species Reactivity: Human, Mouse

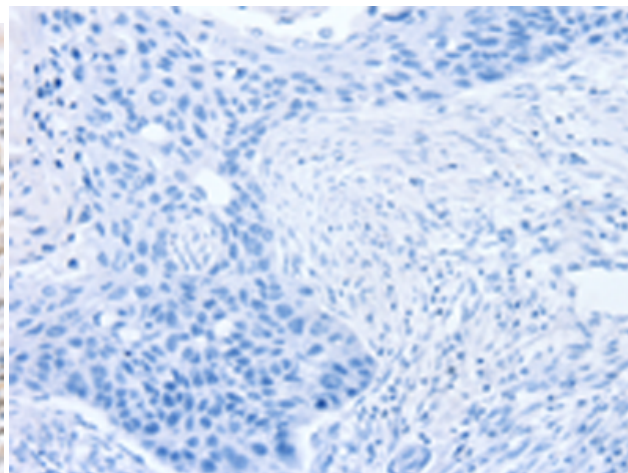
Constituents: PBS (without Mg²⁺ and Ca²⁺), pH 7.4, 150 mM NaCl, 0.05% Sodium Azide and 40% glycerol

Research Areas: Epigenetics and Nuclear Signaling, Cell Biology

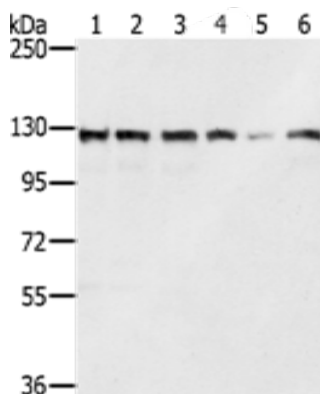
Storage & Shipping: Store at -20°C. Avoid repeated freezing and thawing



Immunohistochemistry analysis of paraffin embedded Human esophagus cancer tissue using 217770(RNF20 Antibody) at a dilution of 1/25(Nucleus).



In comparison with the IHC on the left, the same paraffin-embedded Human esophagus cancer tissue is first treated with the fusion protein and then with 217770(Anti-RNF20 Antibody) at dilution 1/25.



Gel: 6%SDS-PAGE, Lysate: 40 μ g;
Lane 1-6: Lovo cells, A172 cells, A375 cells, 231 cells, Jurkat cells, hela cells;
Primary antibody: 217770(RNF20 Antibody) at dilution 1/350;
Secondary antibody: Goat anti rabbit IgG at 1/8000 dilution;
Exposure time: 5 seconds