

## RNF148 RABBIT PAB

**Cat.#:** S219047

**Product Name:** Anti-RNF148 Rabbit Polyclonal Antibody

**Synonyms:**

**UNIPROT ID:** Q8N7C7 (Gene Accession - BC029264 )

**Background:** RNF148 is a single-pass membrane protein. It contains 1 PA (protease associated) domain and 1 RING-type zinc finger. The exact function of RNF148 remains unknown.

**Immunogen:** Fusion protein of human RNF148

**Applications:** ELISA, IHC

**Recommended Dilutions:** IHC: 50-300; ELISA: 5000-10000

**Host Species:** Rabbit

**Clonality:** Rabbit Polyclonal

**Isotype:** Immunogen-specific rabbit IgG

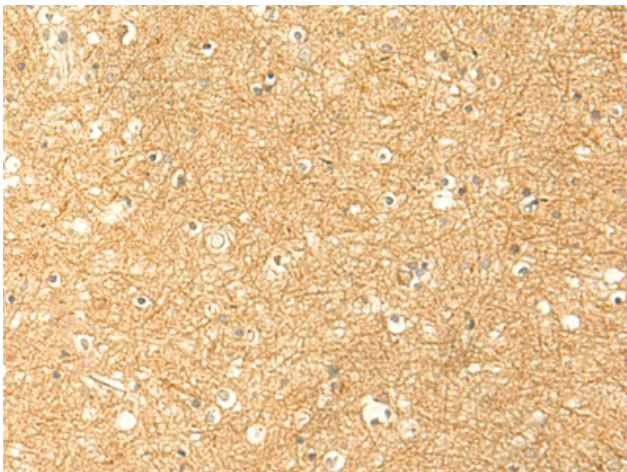
**Purification:** Antigen affinity purification

**Species Reactivity:** Human, Mouse

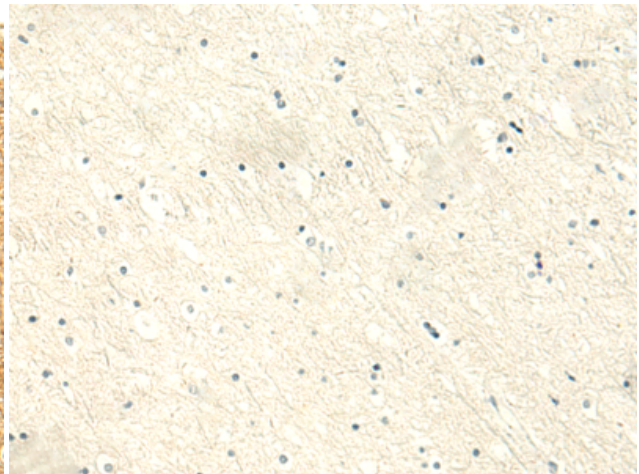
**Constituents:** PBS (without Mg<sup>2+</sup> and Ca<sup>2+</sup>), pH 7.4, 150 mM NaCl, 0.05% Sodium Azide and 40% glycerol

**Research Areas:** Cell Biology

**Storage & Shipping:** Store at -20°C. Avoid repeated freezing and thawing



Immunohistochemistry analysis of paraffin embedded Human brain tissue using 219047(RNF148 Antibody) at a dilution of 1/50(Cell membrane).



In comparison with the IHC on the left, the same paraffin-embedded Human brain tissue is first treated with the fusion protein and then with 219047(Anti-RNF148 Antibody) at dilution 1/50.