

## RNF141 RABBIT PAB

**Cat.#:** S218198

**Product Name:** Anti-RNF141 Rabbit Polyclonal Antibody

**Synonyms:** ZFP26; RFP141; ZNF230

**UNIPROT ID:** Q8WVD5 (Gene Accession - BC018104 )

**Background:** The protein encoded by this gene contains a RING finger, a motif known to be involved in protein-DNA and protein-protein interactions. Abundant expression of this gene was found in the testicular tissue of fertile men, but was not detected in azoospermic patients. Studies of the mouse counterpart suggest that this gene may function as a testis specific transcription factor during spermatogenesis. [provided by RefSeq, Jul 2008]

**Immunogen:** Fusion protein of human RNF141

**Applications:** ELISA, IHC

**Recommended Dilutions:** IHC: 150-300; ELISA: 5000-10000

**Host Species:** Rabbit

**Clonality:** Rabbit Polyclonal

**Isotype:** Immunogen-specific rabbit IgG

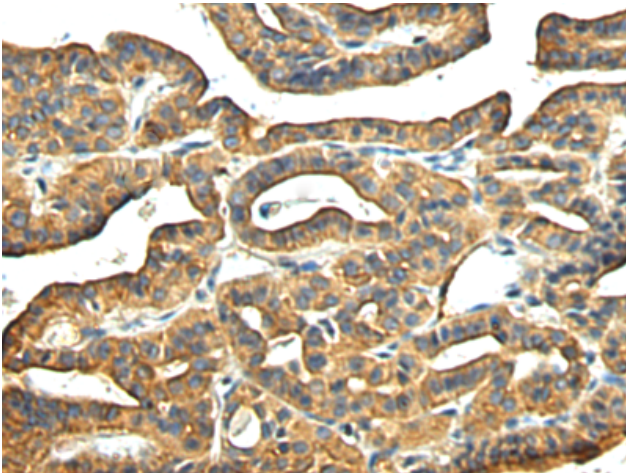
**Purification:** Antigen affinity purification

**Species Reactivity:** Human, Mouse, Rat

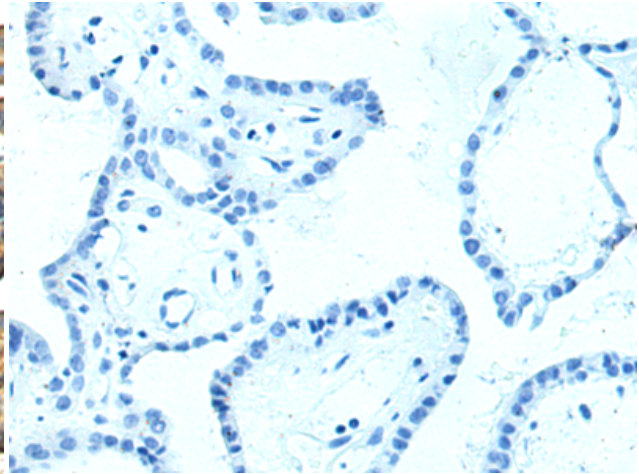
**Constituents:** PBS (without Mg<sup>2+</sup> and Ca<sup>2+</sup>), pH 7.4, 150 mM NaCl, 0.05% Sodium Azide and 40% glycerol

**Research Areas:** Epigenetics and Nuclear Signaling

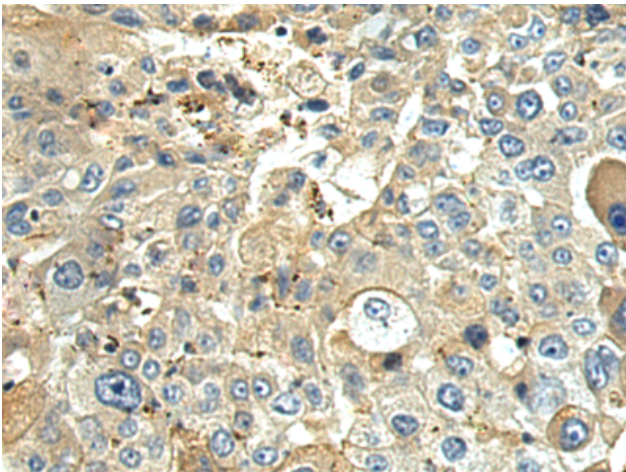
**Storage & Shipping:** Store at -20°C. Avoid repeated freezing and thawing



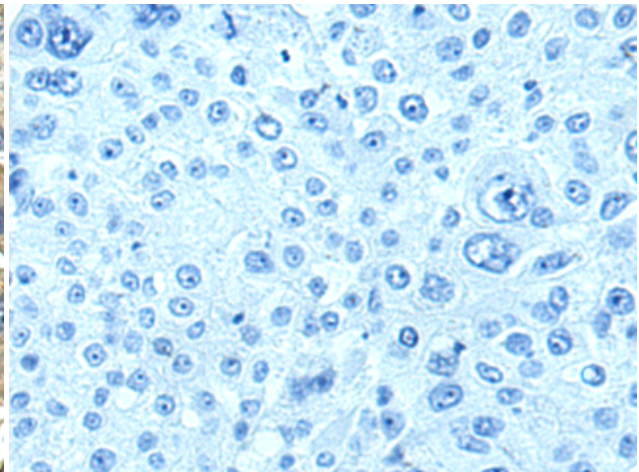
Immunohistochemistry analysis of paraffin embedded Human thyroid cancer tissue using 218198(RNF141 Antibody) at a dilution of 1/160(Cytoplasm).



In comparison with the IHC on the left, the same paraffin-embedded Human thyroid cancer tissue is first treated with the fusion protein and then with 218198(Anti-RNF141 Antibody) at dilution 1/160.



The image on the left is immunohistochemistry of paraffin-embedded Human liver cancer tissue using 218198(Anti-RNF141 Antibody) at a dilution of 1/160.



In comparison with the IHC on the left, the same paraffin-embedded Human liver cancer tissue is first treated with fusion protein and then with D223919(Anti-RNF141 Antibody) at dilution 1/160.