

RNF126 RABBIT PAB

Cat.#: S219982

Product Name: Anti-RNF126 Rabbit Polyclonal Antibody

Synonyms:

UNIPROT ID: Q9BV68 (Gene Accession - NP_919442)

Background: The protein encoded by this gene contains a RING finger domain, a motif present in a variety of functionally distinct proteins and known to be involved in protein-protein and protein-DNA interactions. RNF126 interacts with p21 and RNF126 over-expression increased p21 protein ubiquitination in an E3 ligase activity-dependent manner. RNF126 knockdown induced loss of cell viability in MDA-MB-231 and PC-3 can be partially rescued by depletion of p21. RNF126 stable knockdown in PC3 inhibited tumor growth in SCID mice.

Immunogen: Synthetic peptide of human RNF126

Applications: ELISA, WB, IHC

Recommended Dilutions: IHC: 25-100;WB: 500-2000;ELISA: 1000-5000

Host Species: Rabbit

Clonality: Rabbit Polyclonal

Isotype: Immunogen-specific rabbit IgG

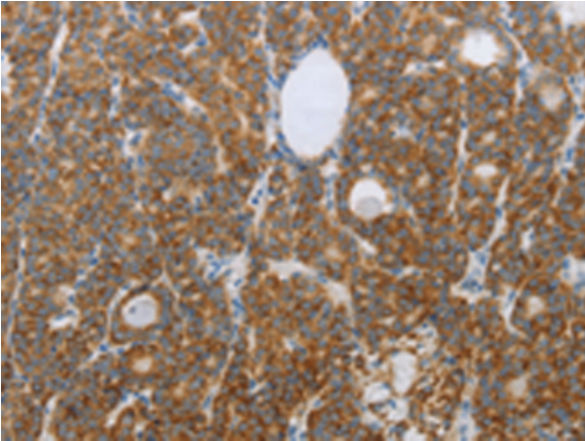
Purification: Antigen affinity purification

Species Reactivity: Human, Mouse, Rat

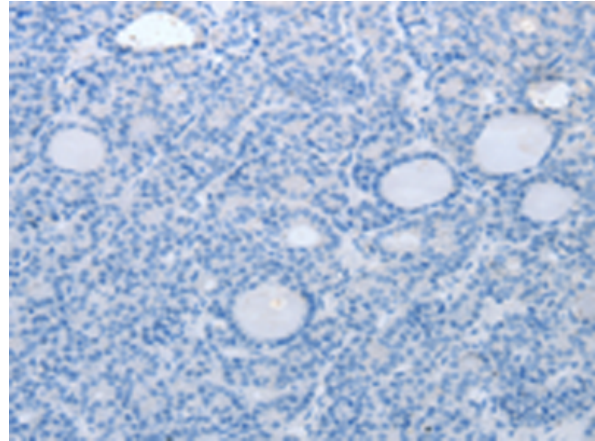
Constituents: PBS (without Mg²⁺ and Ca²⁺), pH 7.4, 150 mM NaCl, 0.05% Sodium Azide and 40% glycerol

Research Areas: Cell Biology

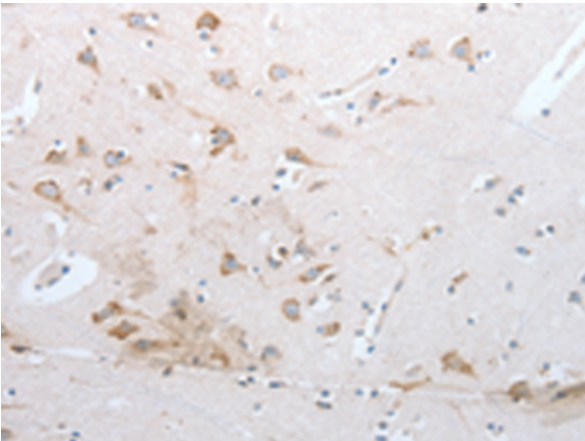
Storage & Shipping: Store at -20°C. Avoid repeated freezing and thawing



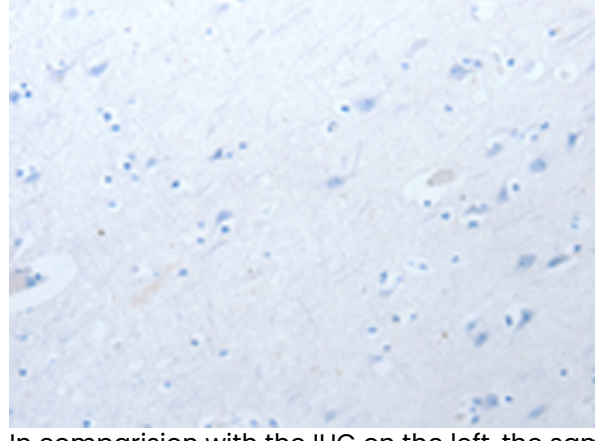
Immunohistochemistry analysis of paraffin embedded Human thyroid cancer tissue using 219982(RNF126 Antibody) at a dilution of 1/20(Cytoplasm).



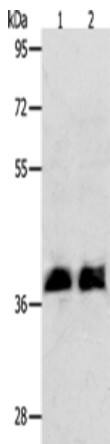
In comparison with the IHC on the left, the same paraffin-embedded Human thyroid cancer tissue is first treated with the synthetic peptide and then with 219982(Anti-RNF126 Antibody) at dilution 1/20.



The image on the left is immunohistochemistry of paraffin-embedded Human brain tissue using 219982(Anti-RNF126 Antibody) at a dilution of 1/20.



In comparison with the IHC on the left, the same paraffin-embedded Human brain tissue is first treated with synthetic peptide and then with D260729(Anti-RNF126 Antibody) at dilution 1/20.



Gel: 10%SDS-PAGE, Lysate: 40 µg;
Lane 1-2: Jurkat cells, K562 cells;
Primary antibody: 219982(RNF126 Antibody) at dilution 1/350;
Secondary antibody: Goat anti rabbit IgG at 1/8000 dilution;
Exposure time: 20 seconds



Product Description

Pioneering GTPase and Oncogene Product Development since 2010
