

RMND5B RABBIT PAB

Cat.#: S218678

Product Name: Anti-RMND5B Rabbit Polyclonal Antibody

Synonyms: GID2; GID2B

UNIPROT ID: Q96G75 (Gene Accession - BC009911)

Background: The function of this protein remains unknown.

Immunogen: Fusion protein of human RMND5B

Applications: ELISA, IHC

Recommended Dilutions: IHC: 50–300; ELISA: 5000–10000

Host Species: Rabbit

Clonality: Rabbit Polyclonal

Isotype: Immunogen-specific rabbit IgG

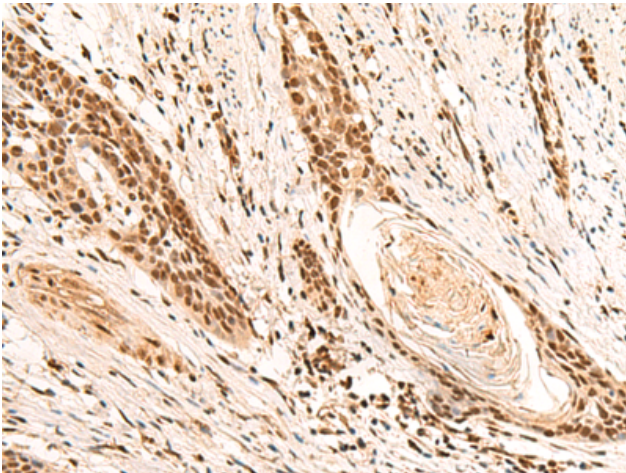
Purification: Antigen affinity purification

Species Reactivity: Human, Mouse

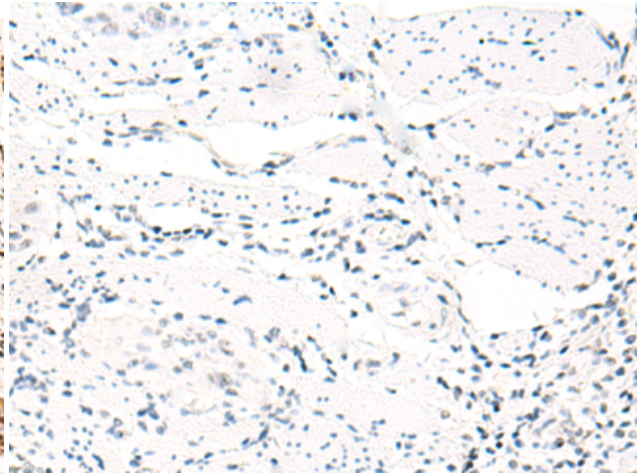
Constituents: PBS (without Mg²⁺ and Ca²⁺), pH 7.4, 150 mM NaCl, 0.05% Sodium Azide and 40% glycerol

Research Areas: Epigenetics and Nuclear Signaling

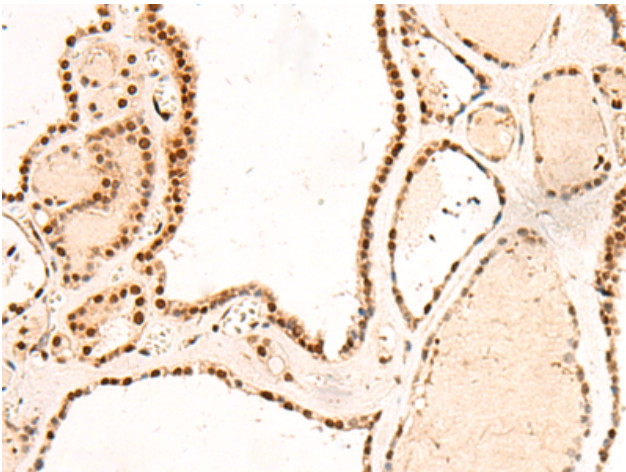
Storage & Shipping: Store at –20°C. Avoid repeated freezing and thawing



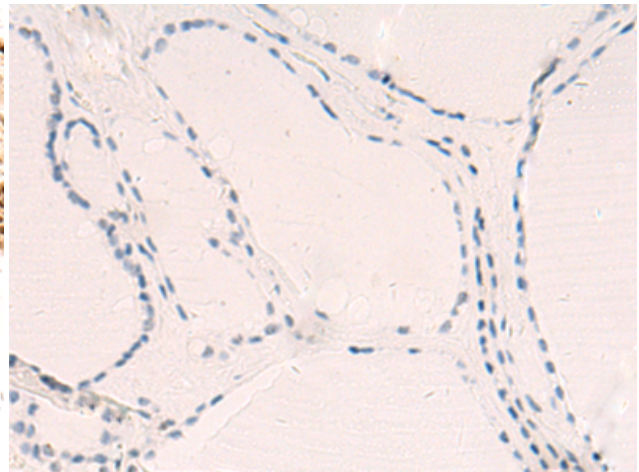
Immunohistochemistry analysis of paraffin embedded Human esophagus cancer tissue using 218678(RMND5B Antibody) at a dilution of 1/50(Nucleus).



In comparison with the IHC on the left, the same paraffin-embedded Human esophagus cancer tissue is first treated with the fusion protein and then with 218678(Anti-RMND5B Antibody) at dilution 1/50.



The image on the left is immunohistochemistry of paraffin-embedded Human thyroid cancer tissue using 218678(Anti-RMND5B Antibody) at a dilution of 1/50.



In comparison with the IHC on the left, the same paraffin-embedded Human thyroid cancer tissue is first treated with fusion protein and then with D224930(Anti-RMND5B Antibody) at dilution 1/50.