

RMND5A RABBIT PAB

Cat.#: S218871

Product Name: Anti-RMND5A Rabbit Polyclonal Antibody

Synonyms: CTLH; GID2; RMD5; GID2A; p44CTLH

UNIPROT ID: Q9H871 (Gene Accession - BC012165)

Background: The function of this protein remains unknown.

Immunogen: Fusion protein of human RMND5A

Applications: ELISA, IHC

Recommended Dilutions: IHC: 40-200; ELISA: 5000-10000

Host Species: Rabbit

Clonality: Rabbit Polyclonal

Isotype: Immunogen-specific rabbit IgG

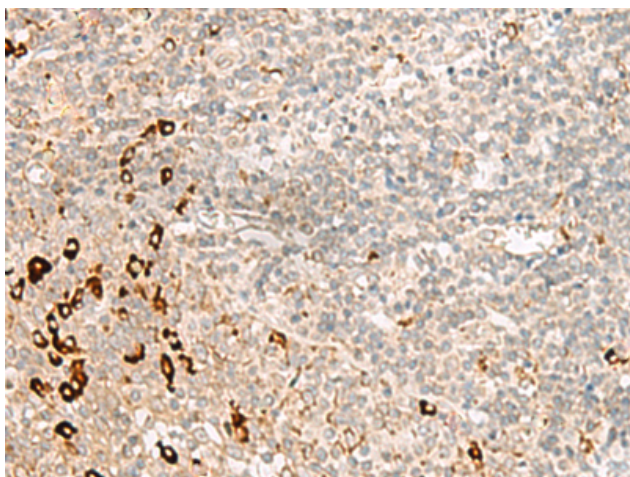
Purification: Antigen affinity purification

Species Reactivity: Human, Mouse

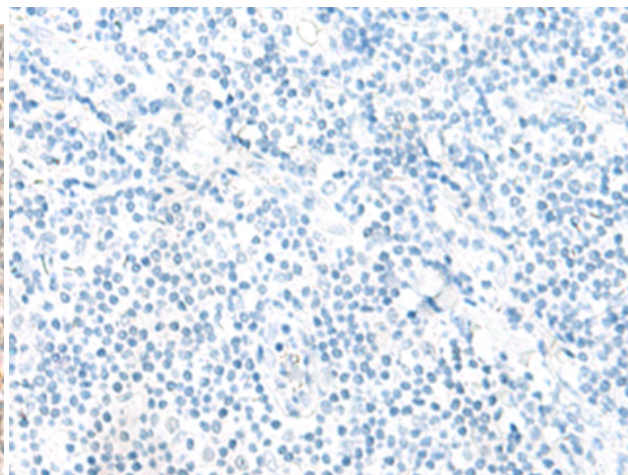
Constituents: PBS (without Mg²⁺ and Ca²⁺), pH 7.4, 150 mM NaCl, 0.05% Sodium Azide and 40% glycerol

Research Areas: Signal Transduction

Storage & Shipping: Store at -20°C. Avoid repeated freezing and thawing



Immunohistochemistry analysis of paraffin embedded Human tonsil tissue using 218871(RMND5A Antibody) at a dilution of 1/50(Cytoplasm).



In comparison with the IHC on the left, the same paraffin-embedded Human tonsil tissue is first treated with the fusion protein and then with 218871(Anti-RMND5A Antibody) at dilution 1/50.