

## RMDN2 RABBIT PAB

**Cat.#:** S219103

**Product Name:** Anti-RMDN2 Rabbit Polyclonal Antibody

**Synonyms:** RMD2; RMD4; RMD-2; FAM82A; BLOCK18; FAM82A1; PRO34163; PYST9371

**UNIPROT ID:** Q96LZ7 (Gene Accession - BC024243 )

**Background:** The human protein FAM82A1, also known as regulator of microtubule dynamics 2 (RMD2), was one of three proteins identified as related to a family of microtubule-associated proteins in *C. elegans*. FAM82A1 contains multiple coiled-coil domains and localizes to the spindle microtubules and spindle poles during cell division. During interphase, RMD2 localizes to the cytoplasm with protein observed in the microtubule lattice and perinuclear region.

**Immunogen:** Fusion protein of human RMDN2

**Applications:** ELISA, IHC

**Recommended Dilutions:** IHC: 50–300; ELISA: 5000–10000

**Host Species:** Rabbit

**Clonality:** Rabbit Polyclonal

**Isotype:** Immunogen-specific rabbit IgG

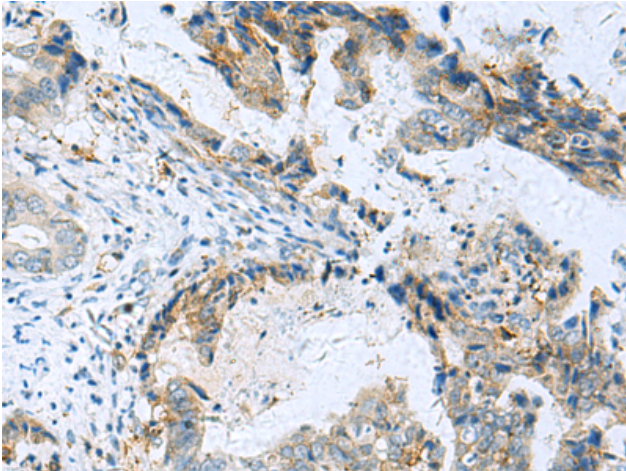
**Purification:** Antigen affinity purification

**Species Reactivity:** Human, Mouse, Rat

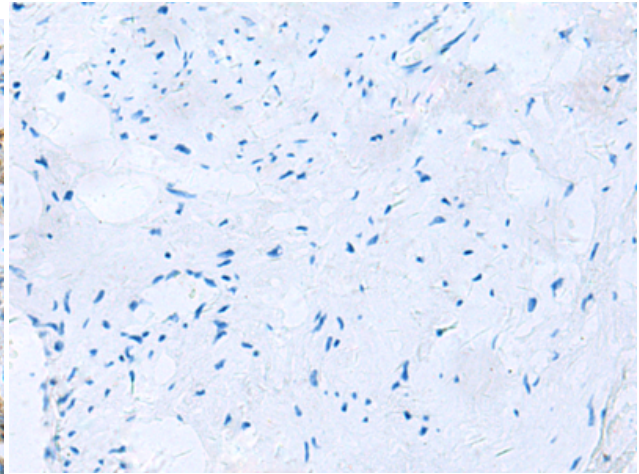
**Constituents:** PBS (without Mg<sup>2+</sup> and Ca<sup>2+</sup>), pH 7.4, 150 mM NaCl, 0.05% Sodium Azide and 40% glycerol

**Research Areas:** Signal Transduction

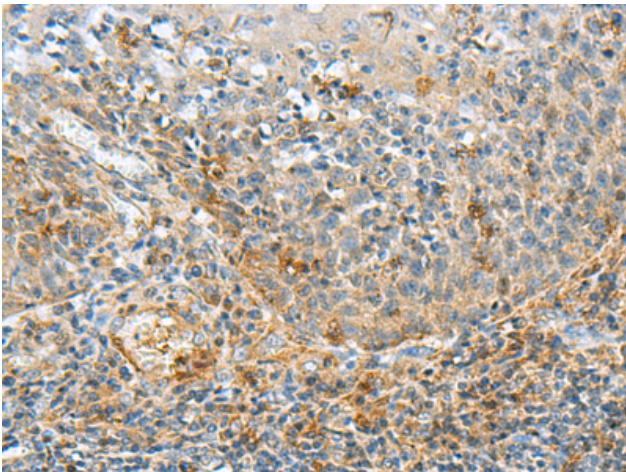
**Storage & Shipping:** Store at -20°C. Avoid repeated freezing and thawing



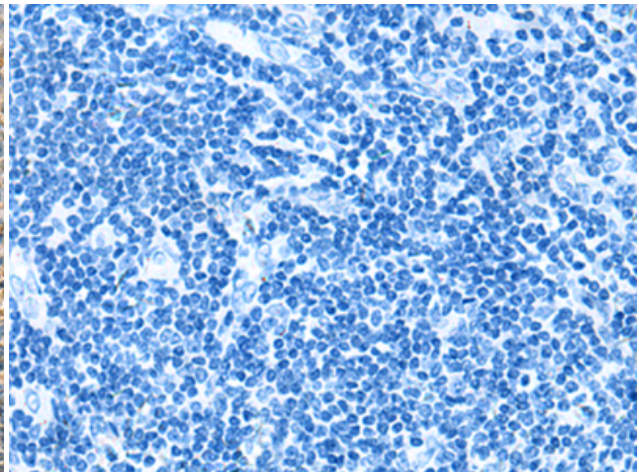
Immunohistochemistry analysis of paraffin embedded Human cervical cancer tissue using 219103(RMDN2 Antibody) at a dilution of 1/70(Cytoplasm).



In comparison with the IHC on the left, the same paraffin-embedded Human cervical cancer tissue is first treated with the fusion protein and then with 219103(Anti-RMDN2 Antibody) at dilution 1/70.



The image on the left is immunohistochemistry of paraffin-embedded Human tonsil tissue using 219103(Anti-RMDN2 Antibody) at a dilution of 1/70.



In comparison with the IHC on the left, the same paraffin-embedded Human tonsil tissue is first treated with fusion protein and then with D225843(Anti-RMDN2 Antibody) at dilution 1/70.