

RMC1 RABBIT PAB

Cat.#: S218396

Product Name: Anti-RMC1 Rabbit Polyclonal Antibody

Synonyms: MIC1; Mic-1; WDR98; C18orf8; HsT2591

UNIPROT ID: Q96DM3 (Gene Accession - BC002950)

Background: This gene encodes a colon cancer associated protein. [provided by RefSeq, Jan 2013]

Immunogen: Fusion protein of human RMC1

Applications: ELISA, IHC

Recommended Dilutions: IHC: 30-150; ELISA: 5000-10000

Host Species: Rabbit

Clonality: Rabbit Polyclonal

Isotype: Immunogen-specific rabbit IgG

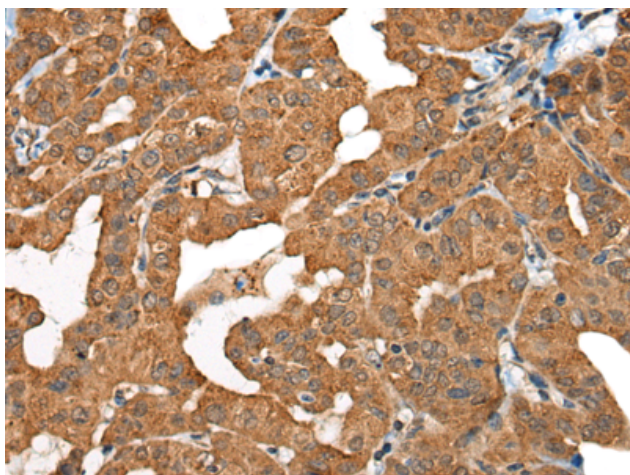
Purification: Antigen affinity purification

Species Reactivity: Human, Mouse

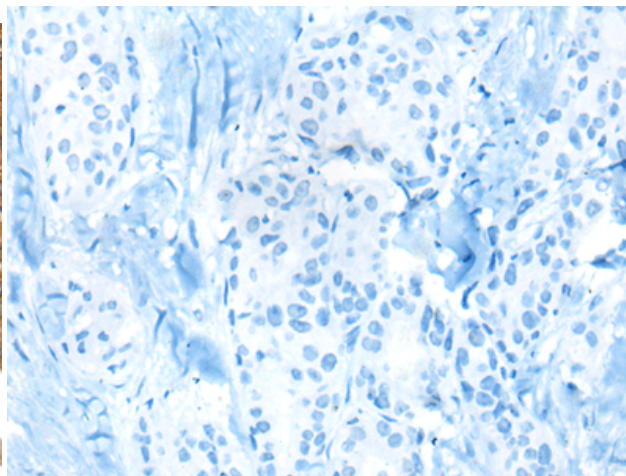
Constituents: PBS (without Mg²⁺ and Ca²⁺), pH 7.4, 150 mM NaCl, 0.05% Sodium Azide and 40% glycerol

Research Areas: Cell Biology

Storage & Shipping: Store at -20°C. Avoid repeated freezing and thawing



Immunohistochemistry analysis of paraffin embedded Human thyroid cancer tissue using 218396(RMC1 Antibody) at a dilution of 1/25(Cytoplasm).



In comparison with the IHC on the left, the same paraffin-embedded Human thyroid cancer tissue is first treated with the fusion protein and then with 218396(Anti-RMC1 Antibody) at dilution 1/25.