

## RIOK1 RABBIT PAB

**Cat.#:** S219156

**Product Name:** Anti-RIOK1 Rabbit Polyclonal Antibody

**Synonyms:** RIO1; AD034; RRP10; bA288G3.1

**UNIPROT ID:** Q9BRS2 (Gene Accession - BC006104 )

**Background:** The protein encoded by this gene competes with pICln for inclusion in the protein arginine methyltransferase 5 complex. This complex targets substrates for dimethylation. The encoded protein is essential for the last steps in the maturation of 40S subunits.

**Immunogen:** Fusion protein of human RIOK1

**Applications:** ELISA, IHC

**Recommended Dilutions:** IHC: 70-350; ELISA: 5000-10000

**Host Species:** Rabbit

**Clonality:** Rabbit Polyclonal

**Isotype:** Immunogen-specific rabbit IgG

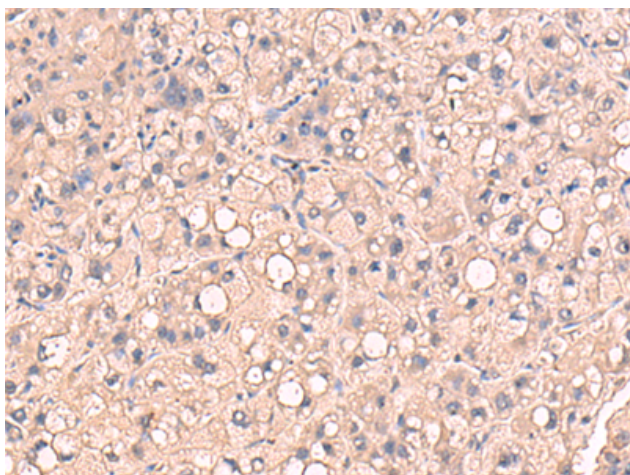
**Purification:** Antigen affinity purification

**Species Reactivity:** Human, Mouse

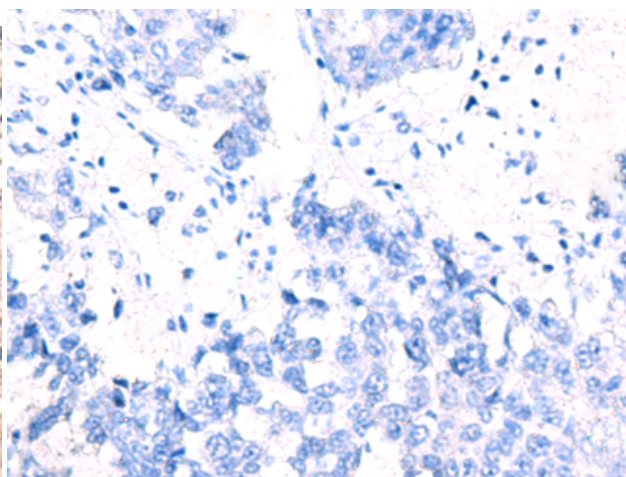
**Constituents:** PBS (without Mg<sup>2+</sup> and Ca<sup>2+</sup>), pH 7.4, 150 mM NaCl, 0.05% Sodium Azide and 40% glycerol

**Research Areas:** Signal Transduction

**Storage & Shipping:** Store at -20°C. Avoid repeated freezing and thawing



Immunohistochemistry analysis of paraffin embedded Human liver cancer tissue using 219156(RIOK1 Antibody) at a dilution of 1/80(Cytoplasm).



In comparison with the IHC on the left, the same paraffin-embedded Human liver cancer tissue is first treated with the fusion protein and then with 219156(Anti-RIOK1 Antibody) at dilution 1/80.