

## RHOA RABBIT PAB

**Cat.#:** N225463

**Product Name:** Anti-RhoA Rabbit pAb

**Synonyms:** RHOA; ARH12; ARHA; RHO12; Transforming protein RhoA; Rho cDNA clone 12; h12

**UNIPROT ID:** P61586

**Background:** Rho A is a small G protein of the Rho family. Regulates a signal transduction pathway linking plasma membrane receptors to the assembly of focal adhesions and actin stress fibers.

**Immunogen:** The antiserum was produced against synthesized peptide derived from human RhoA. AA range:144-193

**Applications:** ICC/IF,WB,IHC-F,IHC-P,ELISA

**Recommended Dilutions:** WB: 1/500-1/1000 IHC: 1/50-1/100 IF: 1/50-1/200 ELISA: 1/10000

**Host Species:** Rabbit

**Clonality:** Rabbit Polyclonal

**Clone ID:** -

**MW:** Calculated MW: 22 kDa; Observed MW: 22 kDa

**Isotype:** IgG

**Purification:** Affinity Purified

**Species Reactivity:** Human,Mouse,Rat

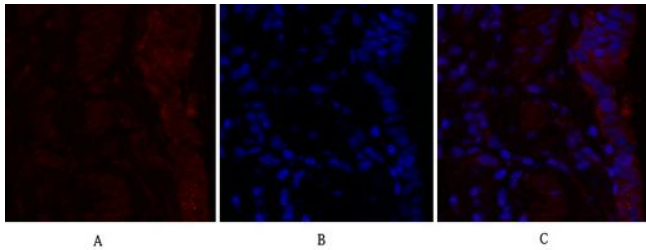
**Conjugation:** Unconjugated

**Modification:** Unmodified

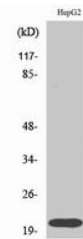
**Constituents:** PBS (without Mg<sup>2+</sup> and Ca<sup>2+</sup>), pH 7.3 containing 50% glycerol, 0.5% BSA and 0.02% sodium azide

**Research Areas:** Signal Transduction

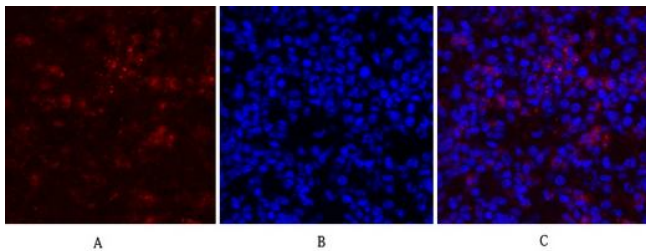
**Storage & Shipping:** Store at -20°C. Avoid repeated freezing and thawing



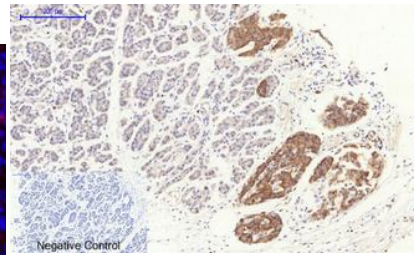
Immunofluorescence analysis of RhoA in rat lung using Rho A antibody (red), and DAPI (blue).



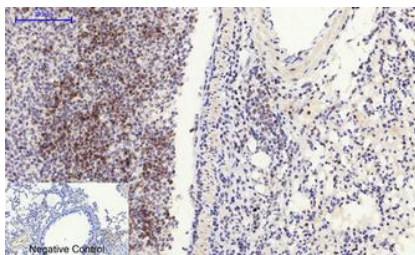
Western blot analysis of RhoA in HepG2 lysates using RhoA antibody.



Immunofluorescence analysis of RhoA in mouse lung using Rho A antibody (red), and DAPI (blue)



Immunohistochemistry analysis of paraffin-embedded Human stomach cancer tissue using Rho A antibody. High-pressure and temperature Sodium Citrate pH 6.0 was used for antigen retrieval. Negative control was used by secondary antibody only.



Immunohistochemistry analysis of paraffin-embedded mouse lung tissue using Rho A antibody. High-pressure and temperature Sodium Citrate pH 6.0 was used for antigen retrieval. Negative control was used by secondary antibody only.