

## RGP1 RABBIT PAB

**Cat.#:** S212386

**Product Name:** Anti-RGP1 Rabbit Polyclonal Antibody

**Synonyms:** KIAA0258

**UNIPROT ID:** Q92546 (Gene Accession - BC001725 )

**Background:** The RIC1-RGP1 complex acts as a guanine nucleotide exchange factor (GEF), which activates RAB6A by exchanging bound GDP for free GTP and may thereby required for efficient fusion of endosome-derived vesicles with the Golgi compartment. The RIC1-RGP1 complex participates in the recycling of mannose-6-phosphate receptors.

**Immunogen:** Fusion protein of human RGP1

**Applications:** ELISA, IHC

**Recommended Dilutions:** IHC: 30-150; ELISA: 5000-10000

**Host Species:** Rabbit

**Clonality:** Rabbit Polyclonal

**Isotype:** Immunogen-specific rabbit IgG

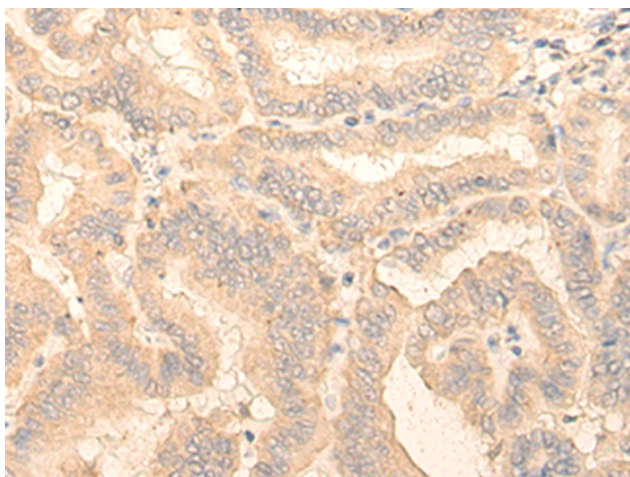
**Purification:** Antigen affinity purification

**Species Reactivity:** Human, Mouse

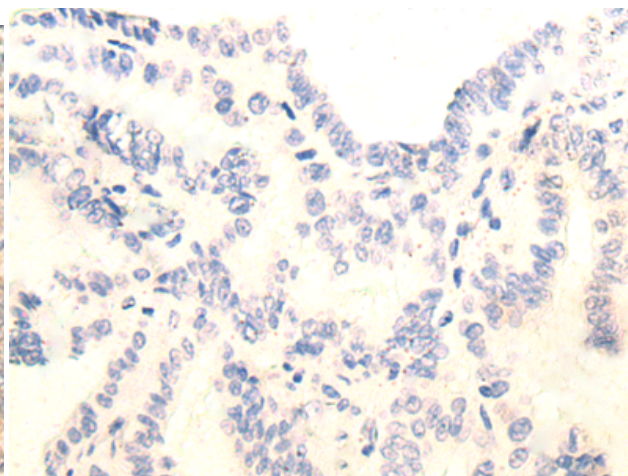
**Constituents:** PBS (without Mg<sup>2+</sup> and Ca<sup>2+</sup>), pH 7.4, 150 mM NaCl, 0.05% Sodium Azide and 40% glycerol

**Research Areas:** Signal Transduction

**Storage & Shipping:** Store at -20°C. Avoid repeated freezing and thawing



Immunohistochemistry analysis of paraffin embedded Human thyroid cancer tissue using 212386(RGP1 Antibody) at a dilution of 1/20(Cytoplasm).



In comparison with the IHC on the left, the same paraffin-embedded Human thyroid cancer tissue is first treated with the fusion protein and then with 212386(Anti-RGP1 Antibody) at dilution 1/20.