

RFFL RABBIT PAB

Cat.#: S217753

Product Name: Anti-RFFL Rabbit Polyclonal Antibody

Synonyms: CARP2; FRING; CARP-2; RNF189; RNF34L; RIFIFYLIN

UNIPROT ID: Q8WZ73 (Gene Accession - BC028424)

Background: Enables enzyme binding activity; p53 binding activity; and ubiquitin protein ligase activity. Involved in cellular protein metabolic process; negative regulation of cysteine-type endopeptidase activity involved in execution phase of apoptosis; and negative regulation of signal transduction. Located in endosome membrane and plasma membrane.

Immunogen: Fusion protein of human RFFL

Applications: ELISA, IHC

Recommended Dilutions: IHC: 50-200; ELISA: 5000-10000

Host Species: Rabbit

Clonality: Rabbit Polyclonal

Isotype: Immunogen-specific rabbit IgG

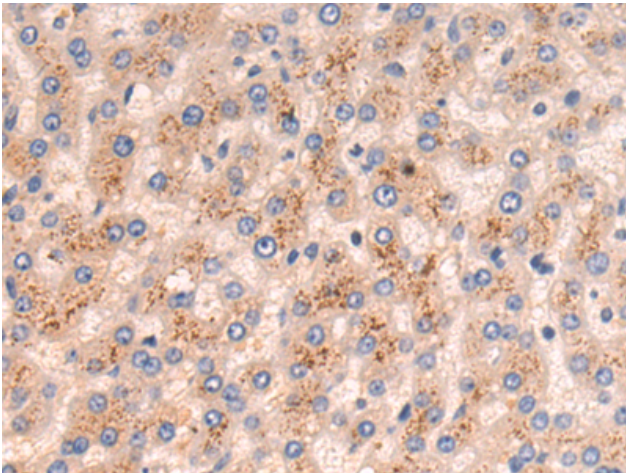
Purification: Antigen affinity purification

Species Reactivity: Human, Mouse, Rat

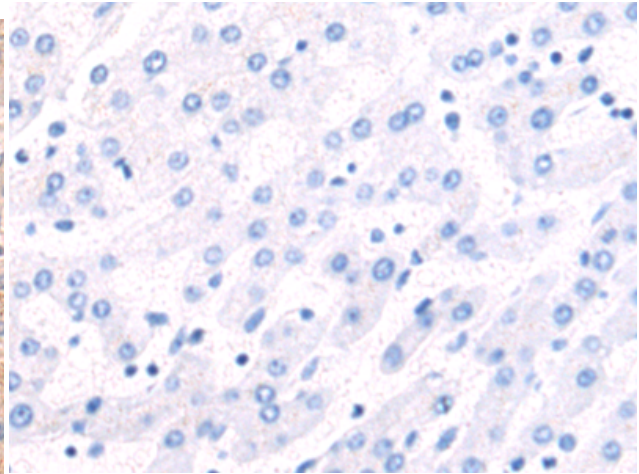
Constituents: PBS (without Mg²⁺ and Ca²⁺), pH 7.4, 150 mM NaCl, 0.05% Sodium Azide and 40% glycerol

Research Areas: Signal Transduction, Epigenetics and Nuclear Signaling, Cancer, Cell Biology

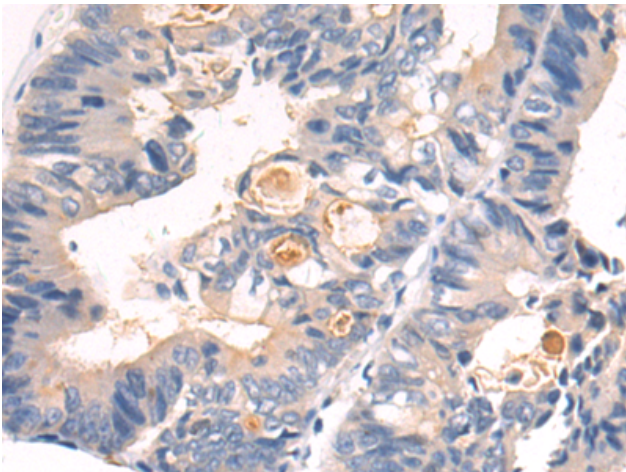
Storage & Shipping: Store at -20°C. Avoid repeated freezing and thawing



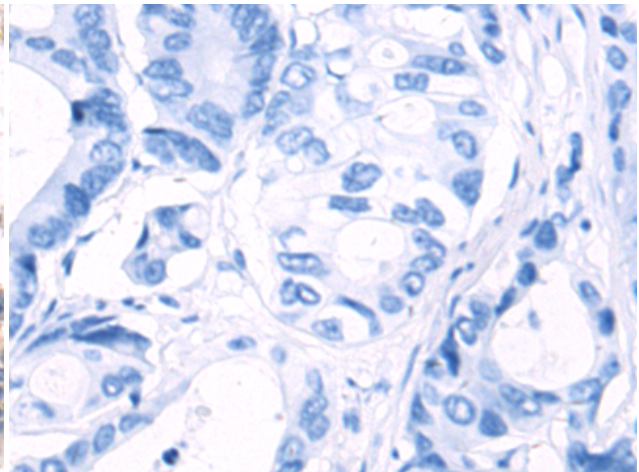
Immunohistochemistry analysis of paraffin embedded Human liver cancer tissue using 217753(RFFL Antibody) at a dilution of 1/70(Cytoplasm).



In comparison with the IHC on the left, the same paraffin-embedded Human liver cancer tissue is first treated with the fusion protein and then with 217753(Anti-RFFL Antibody) at dilution 1/70.



The image on the left is immunohistochemistry of paraffin-embedded Human colorectal cancer tissue using 217753(Anti-RFFL Antibody) at a dilution of 1/70.



In comparison with the IHC on the left, the same paraffin-embedded Human colorectal cancer tissue is first treated with fusion protein and then with D223004(Anti-RFFL Antibody) at dilution 1/70.