

RERG RABBIT PAB

Cat.#: S217752

Product Name: Anti-RERG Rabbit Polyclonal Antibody

Synonyms:

UNIPROT ID: Q96A58 (Gene Accession - BC007997)

Background: RERG, a member of the RAS superfamily of GTPases, inhibits cell proliferation and tumor formation (Finlin et al., 2001 [PubMed 11533059]).

Immunogen: Full length fusion protein

Applications: ELISA, IHC

Recommended Dilutions: IHC: 50–350; ELISA: 5000–10000

Host Species: Rabbit

Clonality: Rabbit Polyclonal

Isotype: Immunogen-specific rabbit IgG

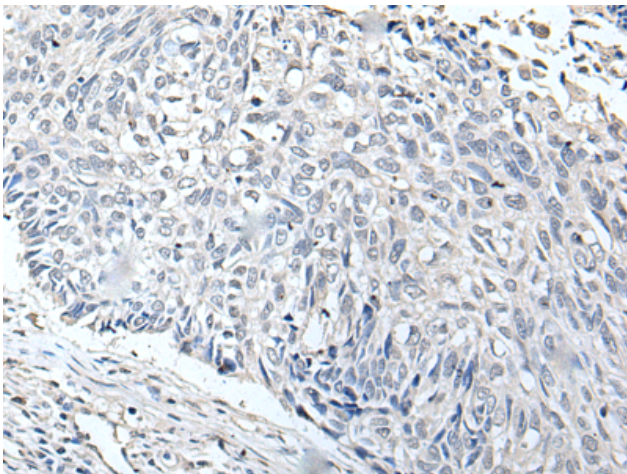
Purification: Antigen affinity purification

Species Reactivity: Human, Mouse

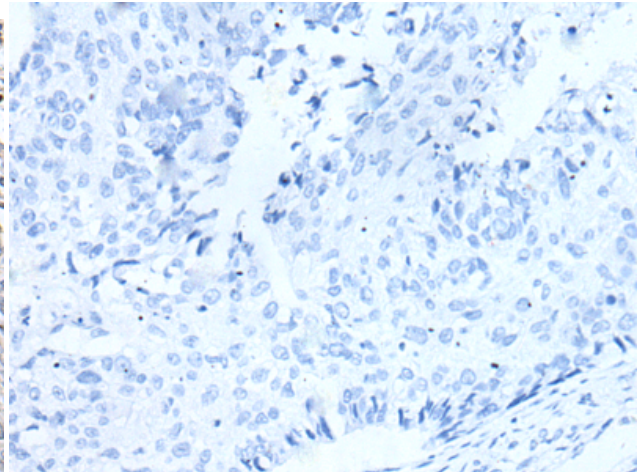
Constituents: PBS (without Mg²⁺ and Ca²⁺), pH 7.4, 150 mM NaCl, 0.05% Sodium Azide and 40% glycerol

Research Areas: Signal Transduction, Cancer

Storage & Shipping: Store at –20°C. Avoid repeated freezing and thawing



Immunohistochemistry analysis of paraffin embedded Human lung cancer tissue using 217752 (REG Antibody) at a dilution of 1/65 (Cytoplasm).



In comparison with the IHC on the left, the same paraffin-embedded Human lung cancer tissue is first treated with the fusion protein and then with 217752 (Anti-REG Antibody) at dilution 1/65.