

## RELN RABBIT PAB

**Cat.#:** S216106

**Product Name:** Anti-RELN Rabbit Polyclonal Antibody

**Synonyms:** RL; ETL7; LIS2; PRO1598

**UNIPROT ID:** P78509 (Gene Accession - NP\_005036 )

**Background:** This gene encodes a large secreted extracellular matrix protein thought to control cell-cell interactions critical for cell positioning and neuronal migration during brain development. This protein may be involved in schizophrenia, autism, bipolar disorder, major depression and in migration defects associated with temporal lobe epilepsy. Mutations of this gene are associated with autosomal recessive lissencephaly with cerebellar hypoplasia. Two transcript variants encoding distinct isoforms have been identified for this gene. Other transcript variants have been described but their full length nature has not been determined.

**Immunogen:** Synthetic peptide of human RELN

**Applications:** ELISA, IHC

**Recommended Dilutions:** IHC: 25-50; ELISA: 5000-10000

**Host Species:** Rabbit

**Clonality:** Rabbit Polyclonal

**Isotype:** Immunogen-specific rabbit IgG

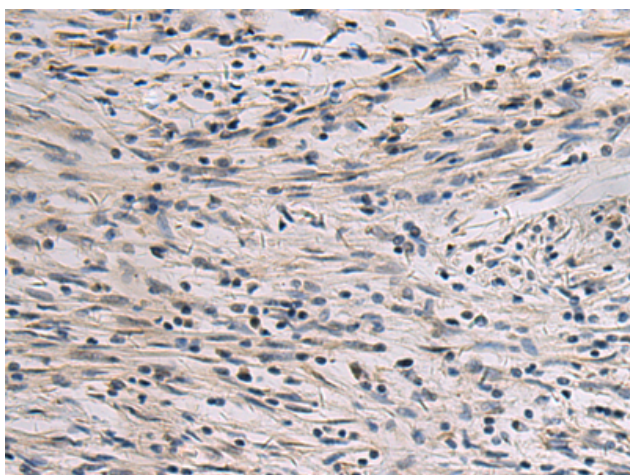
**Purification:** Antigen affinity purification

**Species Reactivity:** Human, Mouse, Rat

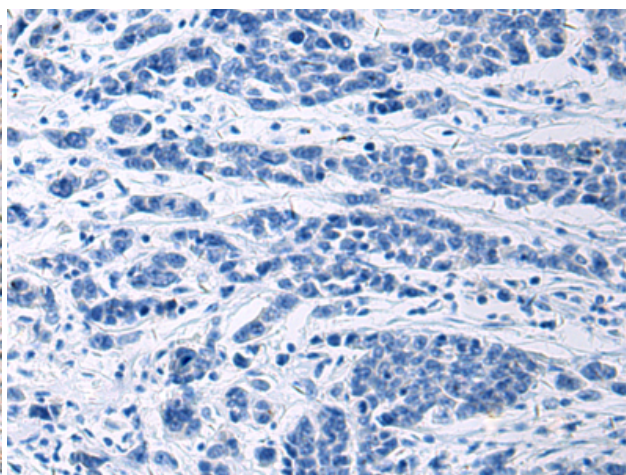
**Constituents:** PBS (without Mg<sup>2+</sup> and Ca<sup>2+</sup>), pH 7.4, 150 mM NaCl, 0.05% Sodium Azide and 40% glycerol

**Research Areas:** Neuroscience

**Storage & Shipping:** Store at -20°C. Avoid repeated freezing and thawing



Immunohistochemistry analysis of paraffin embedded Human colorectal cancer tissue using 216106 (RELN Antibody) at a dilution of 1/45 (Secreted).



In comparison with the IHC on the left, the same paraffin-embedded Human colorectal cancer tissue is first treated with the synthetic peptide and then with 216106 (Anti-RELN Antibody) at dilution 1/45.