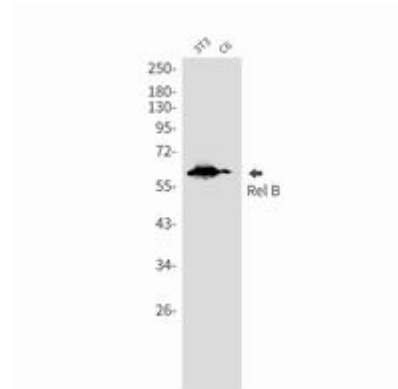


**REL B RABBIT MAB****Cat.#:** N262829**Product Name:** Anti-Rel B Rabbit Monoclonal Antibody**Synonyms:** RELB; Transcription factor RelB; I-Rel**UNIPROT ID:** Q01201**Background:** Transcription factors of the nuclear factor  $\kappa$ B (NF- $\kappa$ B)/Rel family play a pivotal role in inflammatory and immune responses. Involved in many biological processes such as inflammation, immunity, differentiation, cell growth, tumorigenesis and apoptosis.**Immunogen:** A synthetic peptide of human Rel B**Applications:** WB,IP**Recommended Dilutions:** WB: 1/500-1/1000 IP: 1/20**Host Species:** Rabbit**Clonality:** Rabbit Monoclonal**Clone ID:** R07-9J3**MW:** Calculated MW: 62 kDa; Observed MW: 62 kDa**Isotype:** IgG**Purification:** Affinity Purified**Species Reactivity:** Human,Mouse,Rat**Conjugation:** Unconjugated**Modification:** Unmodified**Constituents:** PBS (without  $Mg^{2+}$  and  $Ca^{2+}$ ), pH 7.3 containing 50% glycerol, 0.5% BSA and 0.02% sodium azide**Research Areas:** Cell Biology**Storage & Shipping:** Store at  $-20^{\circ}C$ . Avoid repeated freezing and thawing



Western blot analysis of Rel B in Raji lysates using Rel B antibody.



Western blot analysis of Rel B in 3T3, C6 lysates using Rel B antibody.