

REG3G RABBIT PAB

Cat.#: S217603

Product Name: Anti-REG3G Rabbit Polyclonal Antibody

Synonyms: PAPIB; PAPIB; PAP IB; PAP-1B; UNQ429; LPPM429; REG III; REG-III

UNIPROT ID: Q6UW15 (Gene Accession - BC103854)

Background: This gene encodes a member of the regenerating islet-derived genes (REG)3 protein family. These proteins are secreted, C-type lectins with a carbohydrate recognition domain and N-terminal signal peptide. The protein encoded by this gene is an antibacterial lectin with activity against Gram-positive bacteria. Alternative splicing results in multiple transcript variants encoding multiple isoforms.

Immunogen: Fusion protein of human REG3G

Applications: ELISA, WB, IHC

Recommended Dilutions: IHC: 100-300;WB: 500-2000;ELISA: 2000-5000

Host Species: Rabbit

Clonality: Rabbit Polyclonal

Isotype: Immunogen-specific rabbit IgG

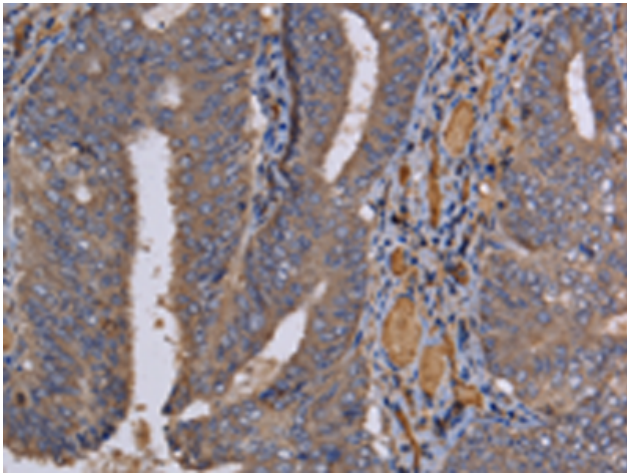
Purification: Antigen affinity purification

Species Reactivity: Human, Mouse

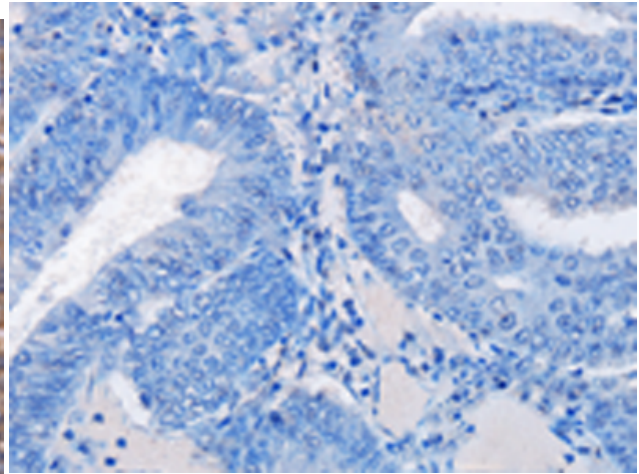
Constituents: PBS (without Mg²⁺ and Ca²⁺), pH 7.4, 150 mM NaCl, 0.05% Sodium Azide and 40% glycerol

Research Areas: Immunology

Storage & Shipping: Store at -20°C. Avoid repeated freezing and thawing



Immunohistochemistry analysis of paraffin embedded Human colon cancer tissue using 217603(REG3G Antibody) at a dilution of 1/60(Cytoplasm).



In comparison with the IHC on the left, the same paraffin-embedded Human colon cancer tissue is first treated with the fusion protein and then with 217603(Anti-REG3G Antibody) at dilution 1/60.



Gel: 10%SDS-PAGE, Lysate: 40 µg;
Lane: Mouse pancreas tissue;
Primary antibody: 217603(REG3G Antibody) at dilution 1/400;
Secondary antibody: Goat anti rabbit IgG at 1/8000 dilution;
Exposure time: 40 seconds