

REG3A RABBIT PAB

Cat.#: S220709

Product Name: Anti-REG3A Rabbit Polyclonal Antibody

Synonyms: HIP; PAP; PAPI; REG3; INGAP; PAP-H; PBCGF; HIP/PAP; REG-III

UNIPROT ID: Q06141 (Gene Accession - NP_002571)

Background: This gene encodes a pancreatic secretory protein that may be involved in cell proliferation or differentiation. It has similarity to the C-type lectin superfamily. The enhanced expression of this gene is observed during pancreatic inflammation and liver carcinogenesis. Alternate splicing results in multiple transcript variants that encode the same protein.

Immunogen: Synthetic peptide of human REG3A

Applications: ELISA, IHC

Recommended Dilutions: IHC: 25-100; ELISA: 1000-2000

Host Species: Rabbit

Clonality: Rabbit Polyclonal

Isotype: Immunogen-specific rabbit IgG

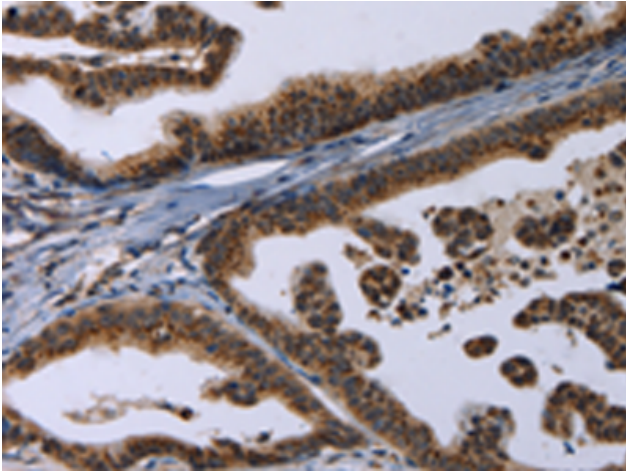
Purification: Antigen affinity purification

Species Reactivity: Human

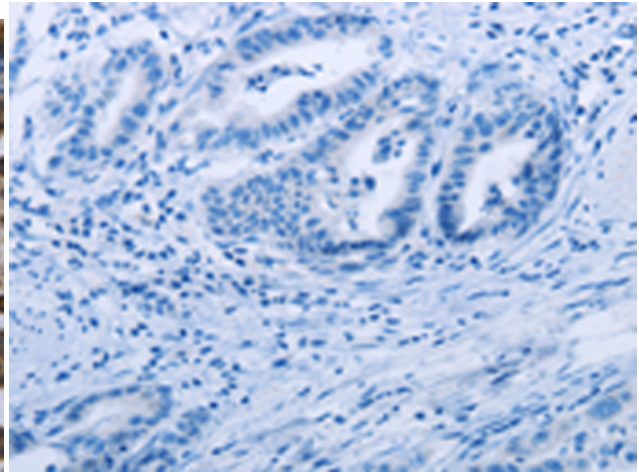
Constituents: PBS (without Mg²⁺ and Ca²⁺), pH 7.4, 150 mM NaCl, 0.05% Sodium Azide and 40% glycerol

Research Areas: Signal Transduction, Immunology

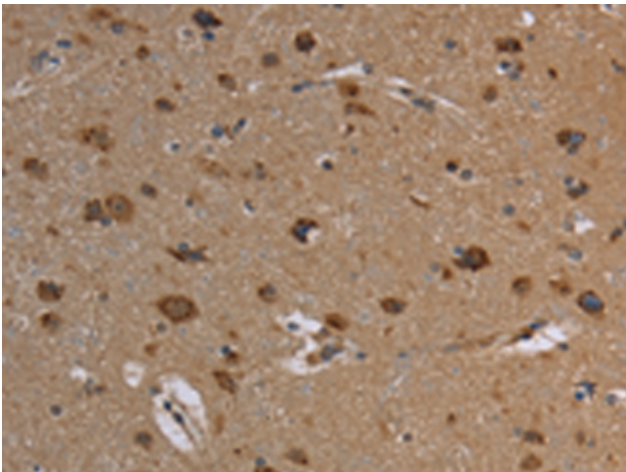
Storage & Shipping: Store at -20°C. Avoid repeated freezing and thawing



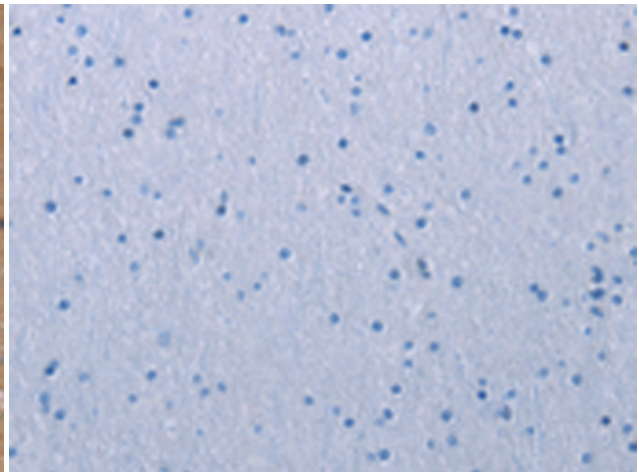
Immunohistochemistry analysis of paraffin-embedded Human gastric cancer tissue using 220709(REG3A Antibody) at a dilution of 1/20(Cytoplasm).



In comparison with the IHC on the left, the same paraffin-embedded Human gastric cancer tissue is first treated with the synthetic peptide and then with 220709(Anti-REG3A Antibody) at dilution 1/20.



The image on the left is immunohistochemistry of paraffin-embedded Human brain tissue using 220709(Anti-REG3A Antibody) at a dilution of 1/20.



In comparison with the IHC on the left, the same paraffin-embedded Human brain tissue is first treated with synthetic peptide and then with D261906(Anti-REG3A Antibody) at dilution 1/20.