

RDC1 RABBIT PAB

Cat.#: N225687

Product Name: Anti-RDC1 Rabbit pAb

Synonyms: RDC1; CXCR7; RDC-1; CMKOR1; CXC-R7; CXCR-7; GPR159

UNIPROT ID: P25106

Background: Plays a regulatory role in CXCR4-mediated activation of cell surface integrins by CXCL12. Required for heart valve development. Acts as coreceptor with CXCR4 for a restricted number of HIV isolates.

Immunogen: A synthesized peptide derived from human CXCR7

Applications: WB,FC

Recommended Dilutions: WB: 1/500-1/1000 FC: 1/50-1/100

Host Species: Rabbit

Clonality: Rabbit Polyclonal

Clone ID: -

MW: Calculated MW: 41 kDa; Observed MW: 41 kDa

Isotype: IgG

Purification: Affinity Chromatography

Species Reactivity: Human,Mouse,Rat

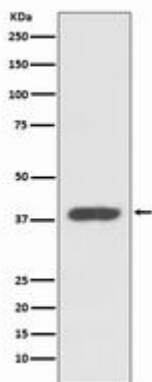
Conjugation: Unconjugated

Modification: Unmodified

Constituents: PBS (without Mg²⁺ and Ca²⁺), pH 7.3 containing 50% glycerol, 0.5% BSA and 0.02% sodium azide

Research Areas: Signal Transduction

Storage & Shipping: Store at -20°C. Avoid repeated freezing and thawing



Western blot analysis of CXCR7 in K562 lysates using RDC1 antibody.



Product Description

Pioneering GTPase and Oncogene Product Development since 2010
