

RCC1 RABBIT MAB

Cat.#: N263529

Product Name: Anti-RCC1 Rabbit Monoclonal Antibody

Synonyms: RCC1; RCC1-I; SNHG3-RCC1; CHC1

UNIPROT ID: P18754

Background: Guanine-nucleotide releasing factor that promotes the exchange of Ran-bound GDP by GTP. Involved in the regulation of onset of chromosome condensation in the S phase. Binds both to the nucleosomes and double-stranded DNA.

Immunogen: A synthetic peptide of human RCC1

Applications: WB, ICC/IF, IP

Recommended Dilutions: WB: 1/500-1/1000 IF: 1/50-1/200 IP: 1/20

Host Species: Rabbit

Clonality: Rabbit Monoclonal

Clone ID: R04-4A8

MW: Calculated MW: 45 kDa; Observed MW: 45 kDa

Isotype: IgG

Purification: Affinity Purified

Species Reactivity: Human

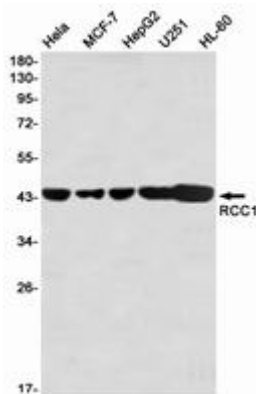
Conjugation: Unconjugated

Modification: Unmodified

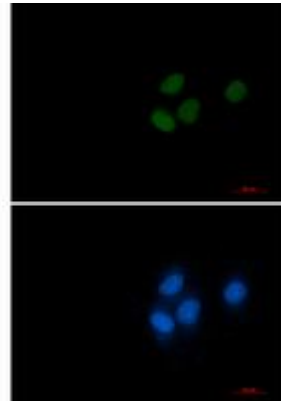
Constituents: PBS (without Mg²⁺ and Ca²⁺), pH 7.3 containing 50% glycerol, 0.5% BSA and 0.02% sodium azide

Research Areas: -

Storage & Shipping: Store at -20°C. Avoid repeated freezing and thawing



Western blot analysis of RCC1 in HeLa, MCF-7, HepG2, U251, HL-60 lysates using RCC1 antibody.



Immunocytochemistry analysis of RCC1 (green) in HeLa using RCC1 antibody, and DAPI (blue).