

## RBM26 RABBIT PAB

**Cat.#:** S222164

**Product Name:** Anti-RBM26 Rabbit Polyclonal Antibody

**Synonyms:** ARRS2; SE70-2; ZC3H17; PRO1777; C13orf10; PPP1R132

**UNIPROT ID:** Q5T8P6 (Gene Accession - NP\_001273560 )

**Background:** RBM26 (RNA binding motif protein 26) bears two RNA recognition motif (RRM) domains and a C3H1-type zinc finger. The function of RBM26 has not been characterized.

**Immunogen:** Synthetic peptide of human RBM26

**Applications:** ELISA, IHC

**Recommended Dilutions:** IHC: 30-150; ELISA: 5000-10000

**Host Species:** Rabbit

**Clonality:** Rabbit Polyclonal

**Isotype:** Immunogen-specific rabbit IgG

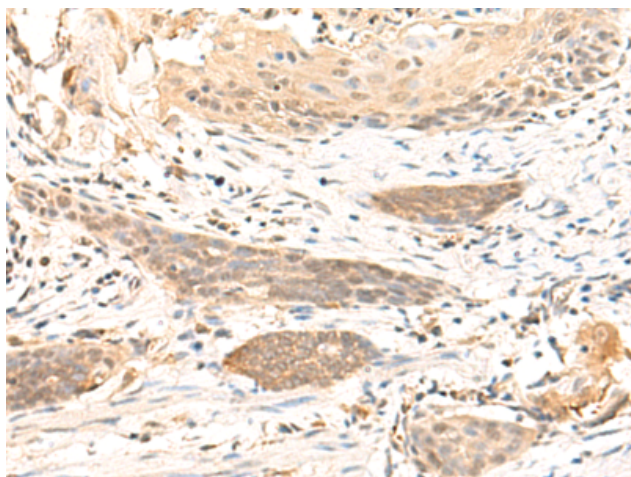
**Purification:** Antigen affinity purification

**Species Reactivity:** Human, Mouse

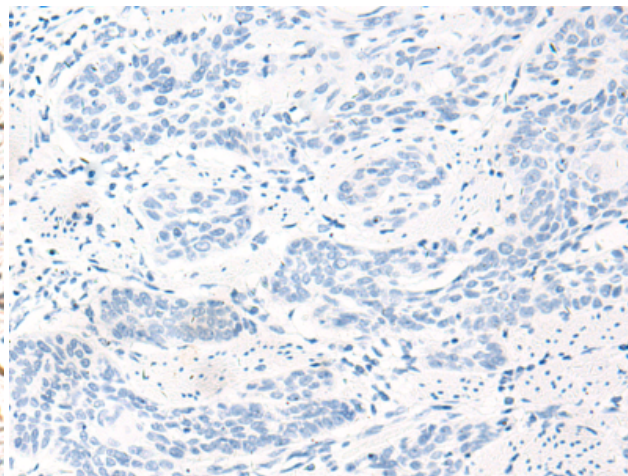
**Constituents:** PBS (without Mg<sup>2+</sup> and Ca<sup>2+</sup>), pH 7.4, 150 mM NaCl, 0.05% Sodium Azide and 40% glycerol

**Research Areas:** Epigenetics and Nuclear Signaling, Cell Biology

**Storage & Shipping:** Store at -20°C. Avoid repeated freezing and thawing



Immunohistochemistry analysis of paraffin embedded Human esophagus cancer tissue using 222164(RBM26 Antibody) at a dilution of 1/35(Nucleus).



In comparison with the IHC on the left, the same paraffin-embedded Human esophagus cancer tissue is first treated with the synthetic peptide and then with 222164(Anti-RBM26 Antibody) at dilution 1/35.