

## RAVER2 RABBIT MAB

**Cat.#:** N262819

**Product Name:** Anti-RAVER2 Rabbit Monoclonal Antibody

**Synonyms:** Protein raver-2

**UNIPROT ID:** Q9HCJ3

**Background:** May bind single-stranded nucleic acids.

**Immunogen:** Recombinant protein of human RAVR2

**Applications:** WB,IHC-F,IHC-P,ICC/IF,IP

**Recommended Dilutions:** WB: 1/500-1/1000 IHC: 1/50-1/100 IF: 1/50-1/200 IP: 1/20

**Host Species:** Rabbit

**Clonality:** Rabbit Monoclonal

**Clone ID:** R09-6H8

**MW:** Calculated MW: 74 kDa; Observed MW: 74 kDa

**Isotype:** IgG

**Purification:** Affinity Purified

**Species Reactivity:** Human

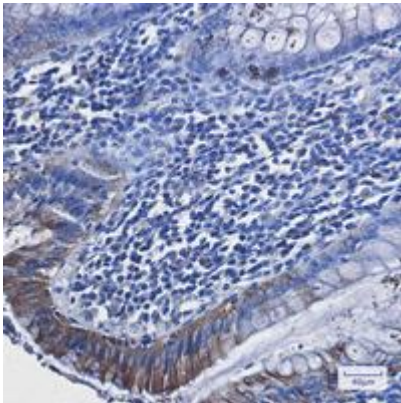
**Conjugation:** Unconjugated

**Modification:** Unmodified

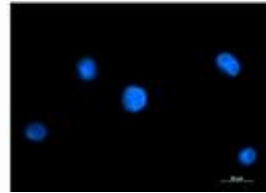
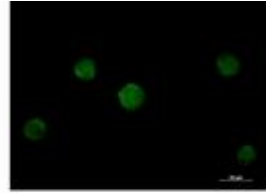
**Constituents:** PBS (without Mg<sup>2+</sup> and Ca<sup>2+</sup>), pH 7.3 containing 50% glycerol, 0.5% BSA and 0.02% sodium azide

**Research Areas:** Epigenetics and Nuclear Signaling

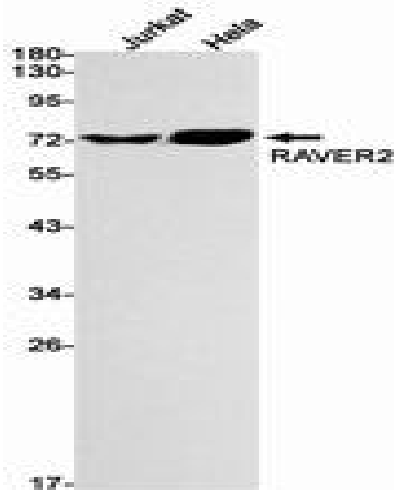
**Storage & Shipping:** Store at -20°C. Avoid repeated freezing and thawing



Immunohistochemistry analysis of paraffin-embedded Human colon cancer tissue using RAVER2 antibody. High-pressure and temperature Sodium Citrate pH 6.0 was used for antigen retrieval.



Immunocytochemistry analysis of RAVER2 (green) in K562 using RAVER2 antibody, and DAPI (blue).



Western blot analysis of RAVER2 in Jurkat, HeLa lysates using RAVER2 antibody.