

RARRES1 RABBIT PAB

Cat.#: S220236

Product Name: Anti-RARRES1 Rabbit Polyclonal Antibody

Synonyms: TIG1

UNIPROT ID: P49788 (Gene Accession - NP_002879)

Background: This gene was identified as a retinoid acid (RA) receptor-responsive gene. It encodes a type I membrane protein. The expression of this gene is upregulated by tazarotene as well as by retinoic acid receptors. The expression of this gene is found to be downregulated in prostate cancer, which is caused by the methylation of its promoter and CpG island. Alternatively spliced transcript variant encoding distinct isoforms have been observed.

Immunogen: Synthetic peptide of human RARRES1

Applications: ELISA, IHC

Recommended Dilutions: IHC: 100-300; ELISA: 5000-20000

Host Species: Rabbit

Clonality: Rabbit Polyclonal

Isotype: Immunogen-specific rabbit IgG

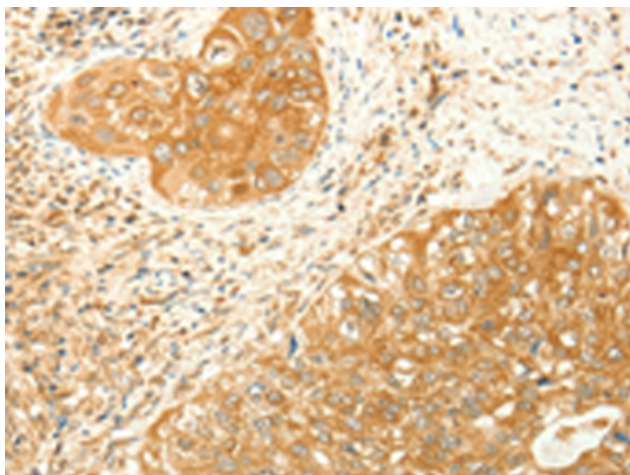
Purification: Antigen affinity purification

Species Reactivity: Human

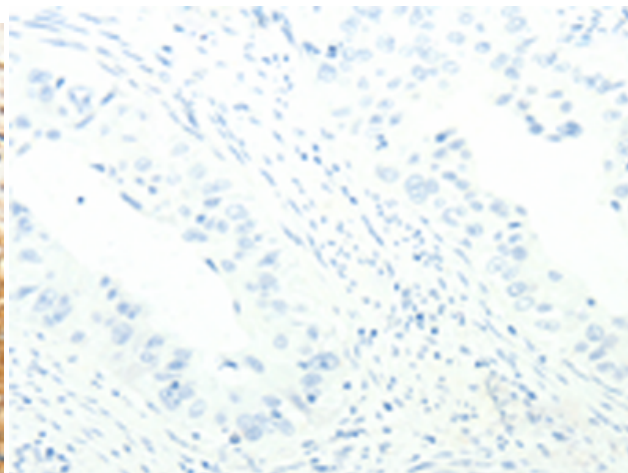
Constituents: PBS (without Mg²⁺ and Ca²⁺), pH 7.4, 150 mM NaCl, 0.05% Sodium Azide and 40% glycerol

Research Areas: Epigenetics and Nuclear Signaling, Cancer

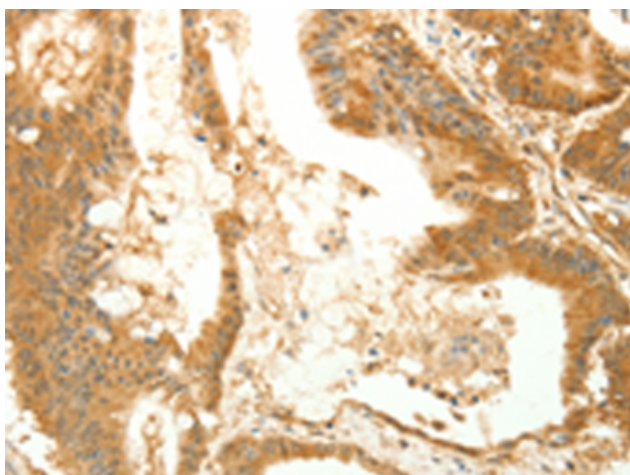
Storage & Shipping: Store at -20°C. Avoid repeated freezing and thawing



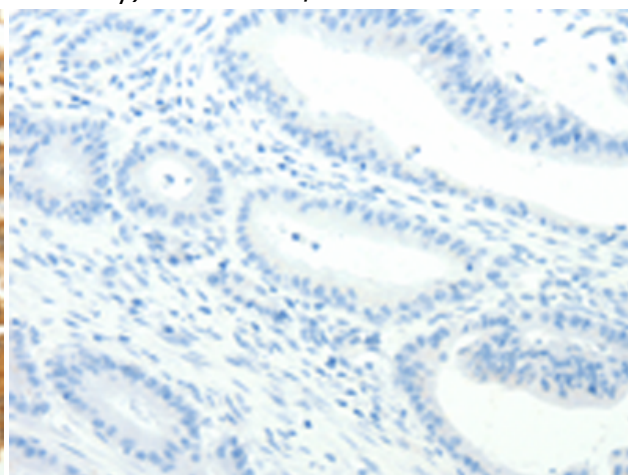
Immunohistochemistry analysis of paraffin embedded Human cervical cancer tissue using 220236 (RARRES1 Antibody) at a dilution of 1/60 (Cytoplasm).



In comparison with the IHC on the left, the same paraffin-embedded Human cervical cancer tissue is first treated with the synthetic peptide and then with 220236 (Anti-RARRES1 Antibody) at dilution 1/60.



The image on the left is immunohistochemistry of paraffin-embedded Human colon cancer tissue using 220236 (Anti-RARRES1 Antibody) at a dilution of 1/60.



In comparison with the IHC on the left, the same paraffin-embedded Human colon cancer tissue is first treated with synthetic peptide and then with D261179 (Anti-RARRES1 Antibody) at dilution 1/60.