

RAP80 RABBIT MAB

Cat.#: N263525

Product Name: Anti-RAP80 Rabbit Monoclonal Antibody

Synonyms: RAP80; X2HRIP110

UNIPROT ID: Q96RL1

Background: Ubiquitin-binding protein that specifically recognizes and binds 'Lys-63'-linked ubiquitin. Plays a central role in the BRCA1-A complex by specifically binding 'Lys-63'-linked ubiquitinated histones H2A and H2AX at DNA lesions sites, leading to target the BRCA1-BARD1 heterodimer to sites of DNA damage at double-strand breaks (DSBs).

Immunogen: A synthetic peptide of human RAP80

Applications: WB,IHC-F,IHC-P,ICC/IF

Recommended Dilutions: WB: 1/500-1/1000 IHC: 1/50-1/100 IF: 1/50-1/200

Host Species: Rabbit

Clonality: Rabbit Monoclonal

Clone ID: R01-0D5

MW: Calculated MW: 80 kDa; Observed MW: 80 kDa

Isotype: IgG

Purification: Affinity Purified

Species Reactivity: Human

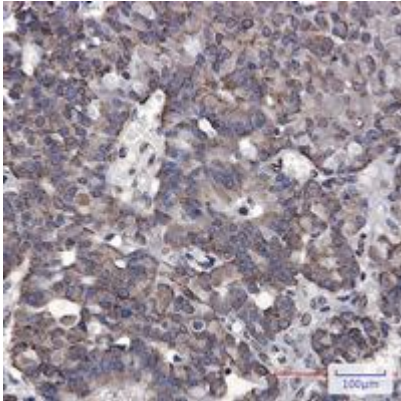
Conjugation: Unconjugated

Modification: Unmodified

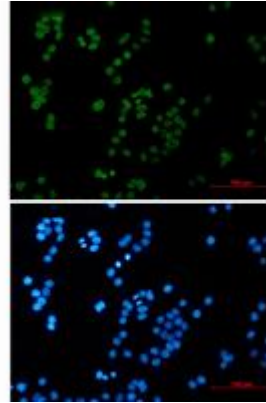
Constituents: PBS (without Mg²⁺ and Ca²⁺), pH 7.3 containing 50% glycerol, 0.5% BSA and 0.02% sodium azide

Research Areas: Epigenetics and Nuclear Signaling

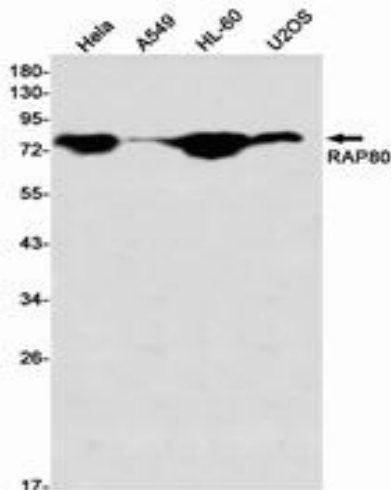
Storage & Shipping: Store at -20°C. Avoid repeated freezing and thawing



Immunohistochemistry analysis of paraffin-embedded Human breast cancer tissue using RAP80 antibody. High-pressure and temperature Sodium Citrate pH 6.0 was used for antigen retrieval.



Immunocytochemistry analysis of RAP80 (green) in HeLa using RAP80 antibody, and DAPI (blue).



Western blot analysis of RAP80 in HeLa, A549, HL-60, U2OS lysates using RAP80 antibody.