

RAN RABBIT MAB

Cat.#: N262812

Product Name: Anti-Ran Rabbit Monoclonal Antibody

Synonyms: RAN; ARA24; OK/SW-cl.81; GTP-binding nuclear protein Ran; Androgen receptor-associated protein 24; GTPase Ran; Ras-like protein TC4; Ras-related nuclear protein

UNIPROT ID: P62826

Background: GTP-binding protein involved in nucleocytoplasmic transport. Required for the import of protein into the nucleus and also for RNA export. Involved in chromatin condensation and control of cell cycle (By similarity).

Immunogen: A synthetic peptide of human Ran

Applications: WB, ICC/IF, IP

Recommended Dilutions: WB: 1/500-1/1000 IF: 1/50-1/200 IP: 1/20

Host Species: Rabbit

Clonality: Rabbit Monoclonal

Clone ID: R01-7J8

MW: Calculated MW: 24 kDa; Observed MW: 24 kDa

Isotype: IgG

Purification: Affinity Purified

Species Reactivity: Human, Mouse, Monkey

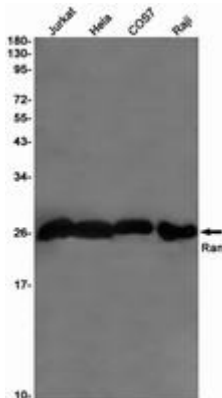
Conjugation: Unconjugated

Modification: Unmodified

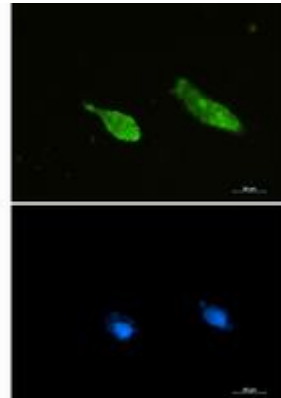
Constituents: PBS (without Mg²⁺ and Ca²⁺), pH 7.3 containing 50% glycerol, 0.5% BSA and 0.02% sodium azide

Research Areas: Cell Biology

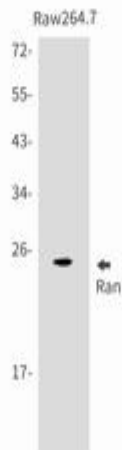
Storage & Shipping: Store at -20°C. Avoid repeated freezing and thawing



Western blot analysis of Ran in Jurkat, HeLa, COS7, Raji lysates using Ran antibody



Immunocytochemistry analysis of Ran (green) in U87-MG using Ran antibody, and DAPI (blue).



Western blot analysis of Ran in Raw264.7 lysates using Ran antibody.