

RALB RABBIT PAB

Cat.#: S219647

Product Name: Anti-RALB Rabbit Polyclonal Antibody

Synonyms:

UNIPROT ID: P11234 (Gene Accession - NP_002872)

Background: This gene encodes a GTP-binding protein that belongs to the small GTPase superfamily and Ras family of proteins. GTP-binding proteins mediate the transmembrane signaling initiated by the occupancy of certain cell surface receptors.

Immunogen: Synthetic peptide of human RALB

Applications: ELISA, WB, IHC

Recommended Dilutions: IHC: Oct-50;WB: 500-2000;ELISA: 500-5000

Host Species: Rabbit

Clonality: Rabbit Polyclonal

Isotype: Immunogen-specific rabbit IgG

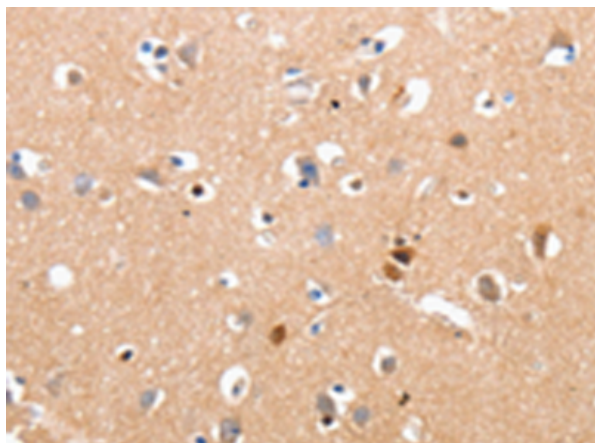
Purification: Antigen affinity purification

Species Reactivity: Human, Mouse, Rat

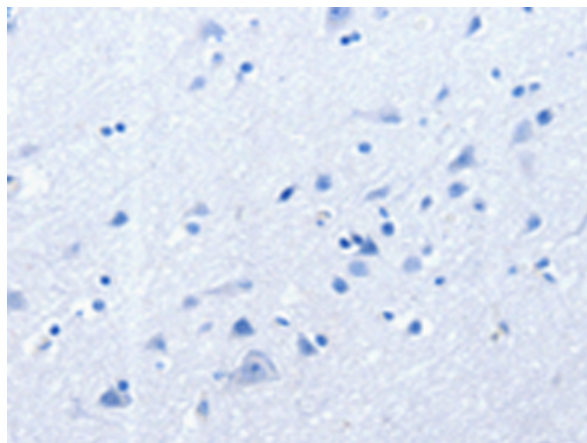
Constituents: PBS (without Mg²⁺ and Ca²⁺), pH 7.4, 150 mM NaCl, 0.05% Sodium Azide and 40% glycerol

Research Areas: Signal Transduction

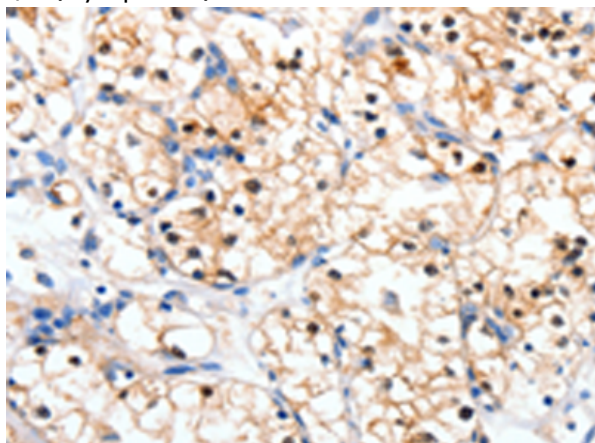
Storage & Shipping: Store at -20°C. Avoid repeated freezing and thawing



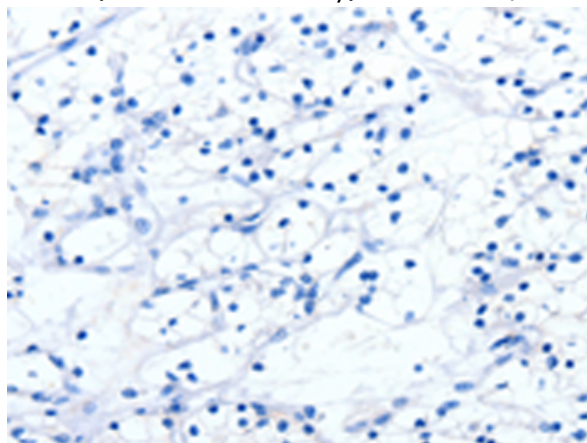
Immunohistochemistry analysis of paraffin embedded Human brain tissue using 219647(RALB Antibody) at a dilution of 1/10(Cytoplasm).



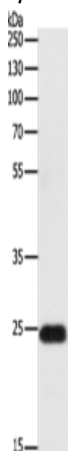
In comparison with the IHC on the left, the same paraffin-embedded Human brain tissue is first treated with the synthetic peptide and then with 219647(Anti-RALB Antibody) at dilution 1/10.



The image on the left is immunohistochemistry of paraffin-embedded Human renal cancer tissue using 219647(Anti-RALB Antibody) at a dilution of 1/10.



In comparison with the IHC on the left, the same paraffin-embedded Human renal cancer tissue is first treated with synthetic peptide and then with D260078(Anti-RALB Antibody) at dilution 1/10.



Gel: 10%SDS-PAGE, Lysate: 30 µg;
Lane: Mouse lung tissue;
Primary antibody: 219647(RALB Antibody) at dilution 1/300;
Secondary antibody: Goat anti rabbit IgG at 1/8000 dilution;
Exposure time: 30 seconds



Product Description

Pioneering GTPase and Oncogene Product Development since 2010
