

RADIXIN RABBIT PAB

Cat.#: N225680

Product Name: Anti-Radixin Rabbit pAb

Synonyms: RDX; Radixin

UNIPROT ID: P35241

Background: Probably plays a crucial role in the binding of the barbed end of actin filaments to the plasma membrane.

Immunogen: A synthesized peptide derived from human Radixin

Applications: WB,IHC-P,ICC/IF,IP,FC

Recommended Dilutions: WB: 1/500-1/1000 IHC: 1/50-1/100 IF: 1/50-1/200 IP: 1/20 FC: 1/50-1/100

Host Species: Rabbit

Clonality: Rabbit Polyclonal

Clone ID: -

MW: Calculated MW: 69 kDa; Observed MW: 80 kDa

Isotype: IgG

Purification: Affinity Chromatography

Species Reactivity: Human,Mouse,Rat

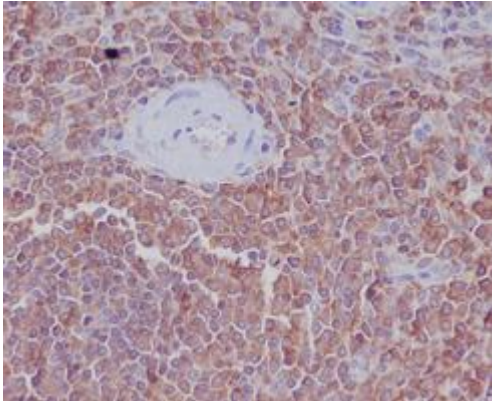
Conjugation: Unconjugated

Modification: Unmodified

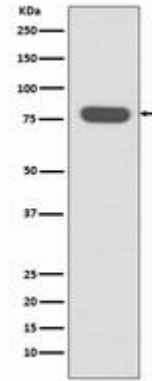
Constituents: PBS (without Mg²⁺ and Ca²⁺), pH 7.3 containing 50% glycerol, 0.5% BSA and 0.02% sodium azide

Research Areas: Signal Transduction

Storage & Shipping: Store at -20°C. Avoid repeated freezing and thawing



Immunohistochemistry analysis of paraffin-embedded Human spleen using Radixin antibody. High-pressure and temperature Sodium Citrate pH 6.0 was used for antigen retrieval.



Western blot analysis of Radixin in HeLa lysates using Radixin antibody.