

RADIL RABBIT PAB

Cat.#: S218666

Product Name: Anti-RADIL Rabbit Polyclonal Antibody

Synonyms: RASIP2

UNIPROT ID: Q96JH8 (Gene Accession - BC004919)

Background: Downstream effector of Rap required for cell adhesion and migration of neural crest precursors during development.

Immunogen: Fusion protein of human RADIL

Applications: ELISA, IHC

Recommended Dilutions: IHC: 40-200; ELISA: 5000-10000

Host Species: Rabbit

Clonality: Rabbit Polyclonal

Isotype: Immunogen-specific rabbit IgG

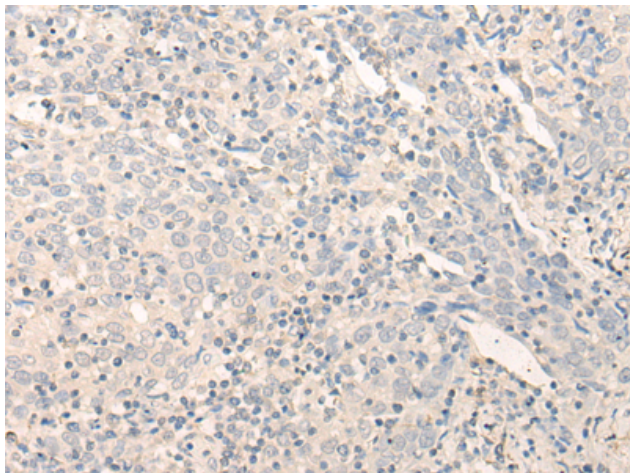
Purification: Antigen affinity purification

Species Reactivity: Human

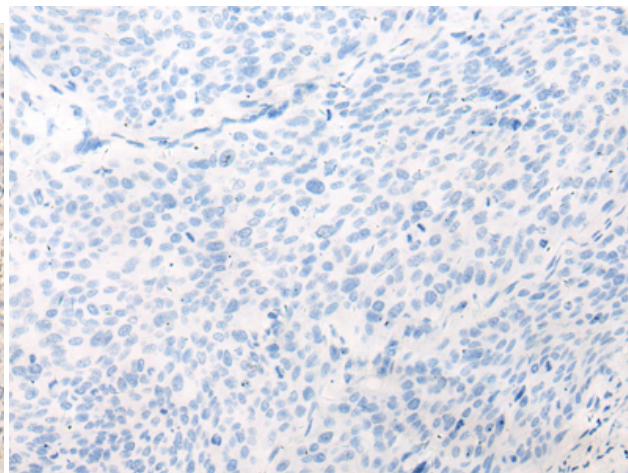
Constituents: PBS (without Mg²⁺ and Ca²⁺), pH 7.4, 150 mM NaCl, 0.05% Sodium Azide and 40% glycerol

Research Areas: Signal Transduction

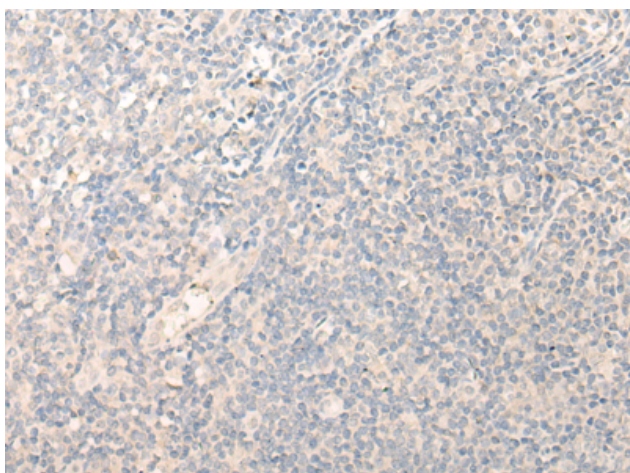
Storage & Shipping: Store at -20°C. Avoid repeated freezing and thawing



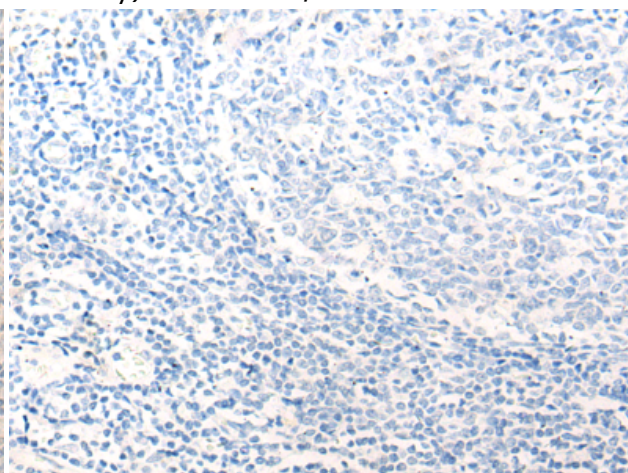
Immunohistochemistry analysis of paraffin embedded Human cervical cancer tissue using 218666(RADIL Antibody) at a dilution of 1/40(Cytoplasm).



In comparison with the IHC on the left, the same paraffin-embedded Human cervical cancer tissue is first treated with the fusion protein and then with 218666(Anti-RADIL Antibody) at dilution 1/40.



The image on the left is immunohistochemistry of paraffin-embedded Human tonsil tissue using 218666(Anti-RADIL Antibody) at a dilution of 1/40.



In comparison with the IHC on the left, the same paraffin-embedded Human tonsil tissue is first treated with fusion protein and then with D224897(Anti-RADIL Antibody) at dilution 1/40.