

RAB5C RABBIT MAB

Cat.#: N261619

Product Name: Anti-Rab5C Rabbit Monoclonal Antibody

Synonyms: Ras-related protein Rab-5C; RABL; L1880; RAB5L; RAB5CL

UNIPROT ID: P51148

Background: Protein transport.

Immunogen: Recombinant protein of human RAB5C

Applications: WB,IHC-F,IHC-P,ICC/IF

Recommended Dilutions: WB: 1/500-1/1000 IHC: 1/50-1/100 IF: 1/50-1/200

Host Species: Rabbit

Clonality: Rabbit Monoclonal

Clone ID: R04-3B7

MW: Calculated MW: 23 kDa; Observed MW: 23 kDa

Isotype: IgG

Purification: Affinity Purified

Species Reactivity: Human,Mouse,Rat

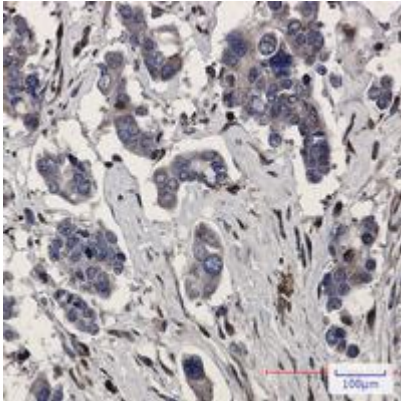
Conjugation: Unconjugated

Modification: Unmodified

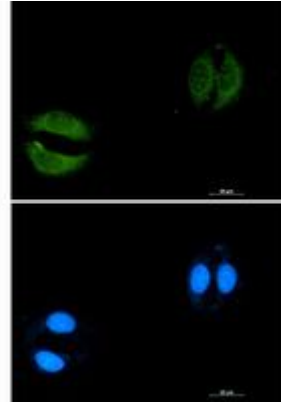
Constituents: PBS (without Mg²⁺ and Ca²⁺), pH 7.3 containing 50% glycerol, 0.5% BSA and 0.02% sodium azide

Research Areas: Signal Transduction

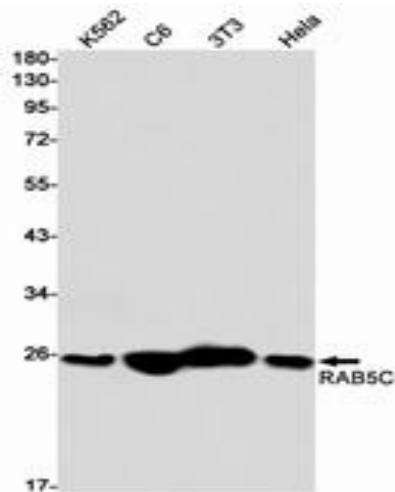
Storage & Shipping: Store at -20°C. Avoid repeated freezing and thawing



Immunohistochemistry analysis of paraffin-embedded Human Cholangiocarcinoma using RAB5C antibody. High-pressure and temperature Sodium Citrate pH 6.0 was used for antigen retrieval.



Immunocytochemistry analysis of Rab5C (green) in A549 using Rab5C antibody, and DAPI (blue).



Western blot analysis of RAB5C in K562, C6, 3T3, HeLa lysates using RAB5C antibody.