

## RAB45 RABBIT MAB

**Cat.#:** N262794

**Product Name:** Anti-Rab45 Rabbit Monoclonal Antibody

**Synonyms:** Ras-related protein Rab-45

**UNIPROT ID:** Q8IZ41

**Background:** Binds predominantly GDP, and also GTP.

**Immunogen:** A synthetic peptide of human RAB45

**Applications:** WB, ICC/IF

**Recommended Dilutions:** WB: 1/500-1/1000 IF: 1/50-1/200

**Host Species:** Rabbit

**Clonality:** Rabbit Monoclonal

**Clone ID:** R03-1G6

**MW:** Calculated MW: 83 kDa; Observed MW: 83 kDa

**Isotype:** IgG

**Purification:** Affinity Purified

**Species Reactivity:** Human, Mouse

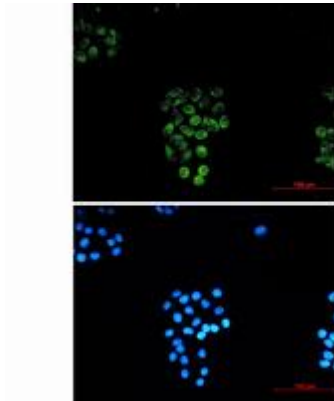
**Conjugation:** Unconjugated

**Modification:** Unmodified

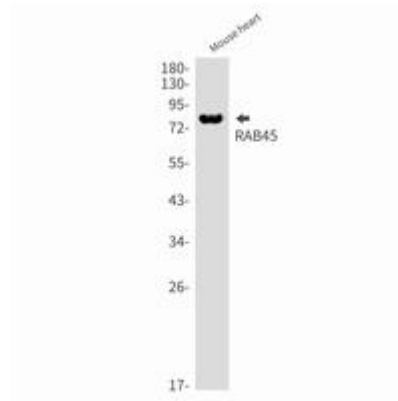
**Constituents:** PBS (without Mg<sup>2+</sup> and Ca<sup>2+</sup>), pH 7.3 containing 50% glycerol, 0.5% BSA and 0.02% sodium azide

**Research Areas:** Signal Transduction

**Storage & Shipping:** Store at -20°C. Avoid repeated freezing and thawing



Immunocytochemistry analysis of RAB45 (green) in HeLa using RAB45 antibody, and DAPI (blue)



Western blot analysis of RAB45 in mouse heart lysates using Rab45 antibody.



Western blot analysis of RAB45 in Jurkat lysates using RAB45 antibody.