

RAB41 RABBIT PAB

Cat.#: S219630

Product Name: Anti-RAB41 Rabbit Polyclonal Antibody

Synonyms:

UNIPROT ID: Q5JT25 (Gene Accession - NP_001027898)

Background: This gene encodes a small GTP-binding protein that belongs to the largest family within the Ras superfamily. These proteins function as regulators of membrane trafficking. They cycle between inactive GDP-bound and activated GTP-bound states, which is controlled by GTP hydrolysis-activating proteins (GAPs). This family member can be activated by the GAP protein RN-Tre, and it is localized to the Golgi complex.

Immunogen: Synthetic peptide of human RAB41

Applications: ELISA, IHC

Recommended Dilutions: IHC: 50-200; ELISA: 1000-5000

Host Species: Rabbit

Clonality: Rabbit Polyclonal

Isotype: Immunogen-specific rabbit IgG

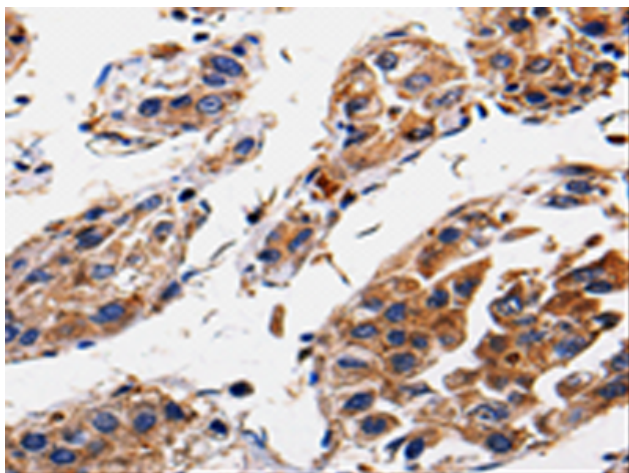
Purification: Antigen affinity purification

Species Reactivity: Human

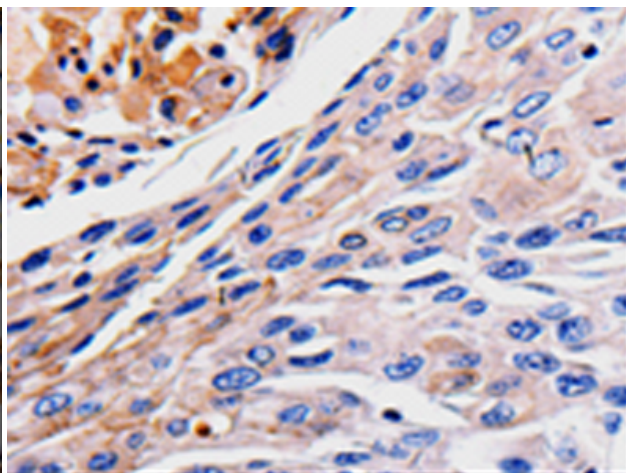
Constituents: PBS (without Mg²⁺ and Ca²⁺), pH 7.4, 150 mM NaCl, 0.05% Sodium Azide and 40% glycerol

Research Areas: Signal Transduction

Storage & Shipping: Store at -20°C. Avoid repeated freezing and thawing



Immunohistochemistry analysis of paraffin-embedded Human gastric cancer tissue using 219630(RAB41 Antibody) at a dilution of 1/60(Cytoplasm).



Immunohistochemistry analysis of paraffin-embedded Human liver cancer tissue using 219630(Anti-RAB41 Antibody) at a dilution of 1/60.