

RAB35 RABBIT PAB

Cat.#: S219628

Product Name: Anti-RAB35 Rabbit Polyclonal Antibody

Synonyms: RAY; H-ray; RABIC

UNIPROT ID: Q15286 (Gene Accession - NP_006852)

Background: Enables GTPase activity; guanyl ribonucleotide binding activity; and phosphatidylinositol-4,5-bisphosphate binding activity. Involved in several processes, including endosomal transport; plasma membrane to endosome transport; and protein localization to endosome. Located in several cellular components, including clathrin-coated endocytic vesicle; clathrin-coated pit; and intercellular bridge.

Immunogen: Synthetic peptide of human RAB35

Applications: ELISA, WB, IHC

Recommended Dilutions: IHC: 50-200;WB: 500-2000;ELISA: 2000-10000

Host Species: Rabbit

Clonality: Rabbit Polyclonal

Isotype: Immunogen-specific rabbit IgG

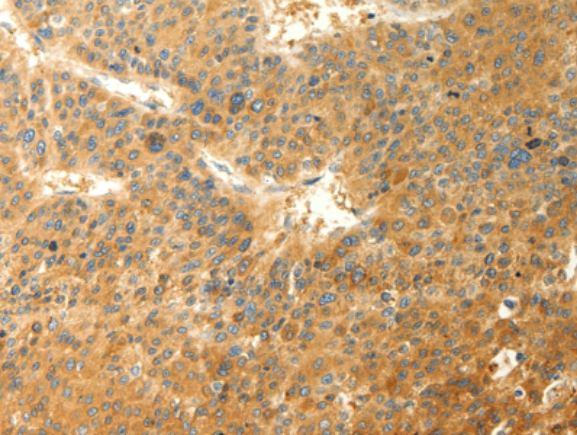
Purification: Antigen affinity purification

Species Reactivity: Human, Mouse, Rat

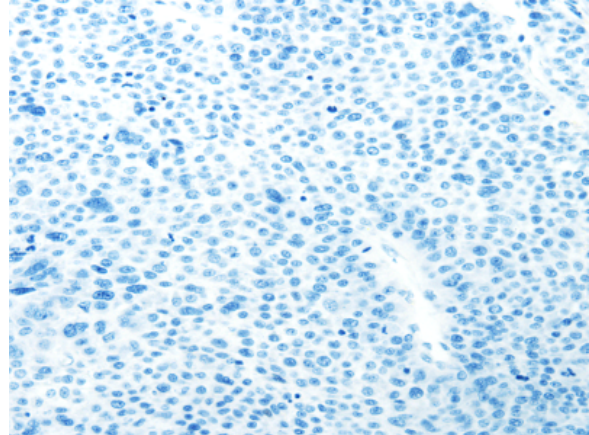
Constituents: PBS (without Mg²⁺ and Ca²⁺), pH 7.4, 150 mM NaCl, 0.05% Sodium Azide and 40% glycerol

Research Areas: Signal Transduction, Cancer

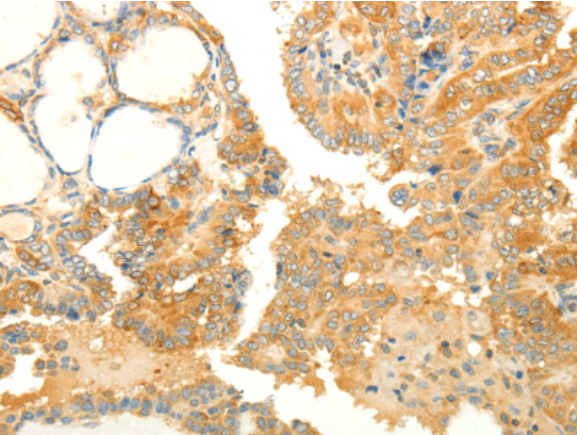
Storage & Shipping: Store at -20°C. Avoid repeated freezing and thawing



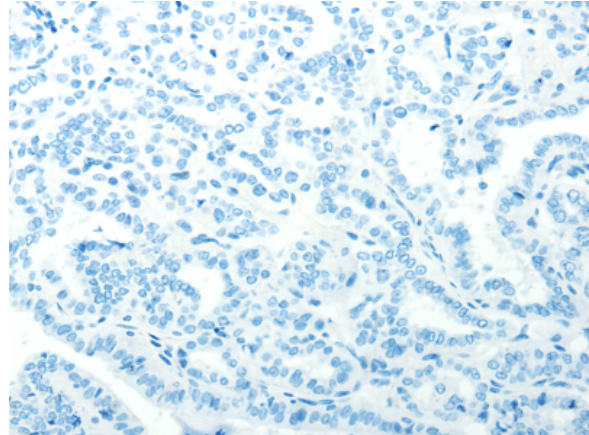
Immunohistochemistry analysis of paraffin embedded Human liver cancer tissue using 219628(RAB35 Antibody) at a dilution of 1/40(Cytoplasm).



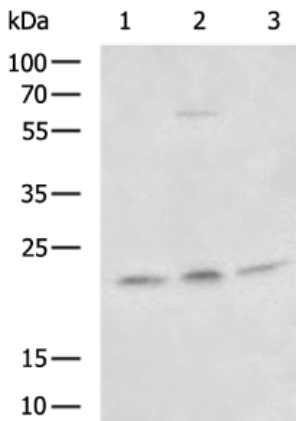
In comparison with the IHC on the left, the same paraffin-embedded Human liver cancer tissue is first treated with the synthetic peptide and then with 219628(Anti-RAB35 Antibody) at dilution 1/40.



The image on the left is immunohistochemistry of paraffin-embedded Human thyroid cancer tissue using 219628(Anti-RAB35 Antibody) at a dilution of 1/40.



In comparison with the IHC on the left, the same paraffin-embedded Human thyroid cancer tissue is first treated with synthetic peptide and then with D260039(Anti-RAB35 Antibody) at dilution 1/40.



Gel: 12%SDS-PAGE, Lysate: 40 µg;
 Lane 1-3: Mouse brain tissue, 293T, NIH/3T3 cell lysates;
 Primary antibody: 219628(RAB35 Antibody) at dilution 1/800;
 Secondary antibody: HRP-conjugated Goat anti rabbit IgG at 1/5000 dilution;
 Exposure time: 10 seconds



Product Description

Pioneering GTPase and Oncogene Product Development since 2010
