

RAB26 RABBIT PAB

Cat.#: N225054

Product Name: Anti-Rab26 Rabbit pAb

Synonyms: RAB26; Ras-related protein Rab-26

UNIPROT ID: Q9ULW5

Background: The small GTPases Rab are key regulators of intracellular membrane trafficking, from the formation of transport vesicles to their fusion with membranes.

Immunogen: Synthesized peptide derived from Rab 26 . at AA range: 180-260

Applications: WB,IHC-P,ELISA

Recommended Dilutions: WB: 1/500-1/1000 IHC: 1/50-1/100 ELISA: 1/10000

Host Species: Rabbit

Clonality: Rabbit Polyclonal

Clone ID: -

MW: Calculated MW: 28 kDa; Observed MW: 28 kDa

Isotype: IgG

Purification: Affinity Purified

Species Reactivity: Human,Mouse,Rat

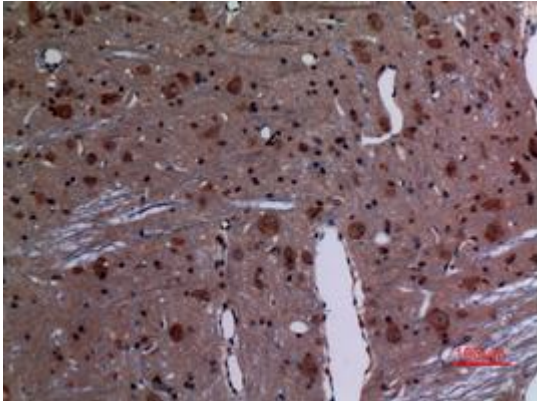
Conjugation: Unconjugated

Modification: Unmodified

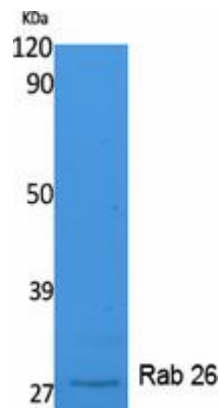
Constituents: PBS (without Mg²⁺ and Ca²⁺), pH 7.3 containing 50% glycerol, 0.5% BSA and 0.02% sodium azide

Research Areas: Signal Transduction

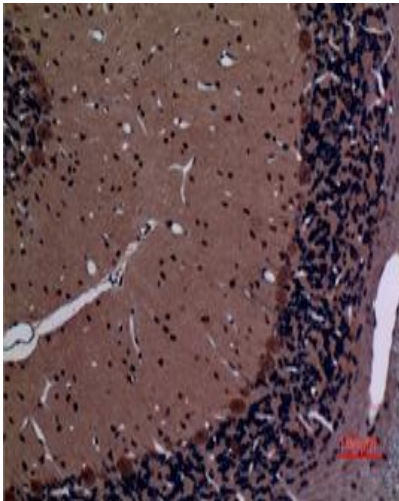
Storage & Shipping: Store at -20°C. Avoid repeated freezing and thawing



Immunohistochemistry analysis of paraffin-embedded rat brain using Rab26 antibody. High-pressure and temperature Sodium Citrate pH 6.0 was used for antigen retrieval.



Western blot analysis of Rab26 in K562 lysates using Rab 26 antibody.



Immunohistochemistry analysis of paraffin-embedded rat brain using Rab26 antibody. High-pressure and temperature Sodium Citrate pH 6.0 was used for antigen retrieval.