

## RAB22A RABBIT PAB

**Cat.#:** S219625

**Product Name:** Anti-RAB22A Rabbit Polyclonal Antibody

**Synonyms:**

**UNIPROT ID:** Q9UL26 (Gene Accession - NP\_065724 )

**Background:** The protein encoded by this gene is a member of the RAB family of small GTPases. The GTP-bound form of the encoded protein has been shown to interact with early-endosomal antigen 1, and may be involved in the trafficking of and interaction between endosomal compartments.

**Immunogen:** Synthetic peptide of human RAB22A

**Applications:** ELISA, WB, IHC

**Recommended Dilutions:** IHC: 50-200;WB: 200-1000;ELISA: 1000-5000

**Host Species:** Rabbit

**Clonality:** Rabbit Polyclonal

**Isotype:** Immunogen-specific rabbit IgG

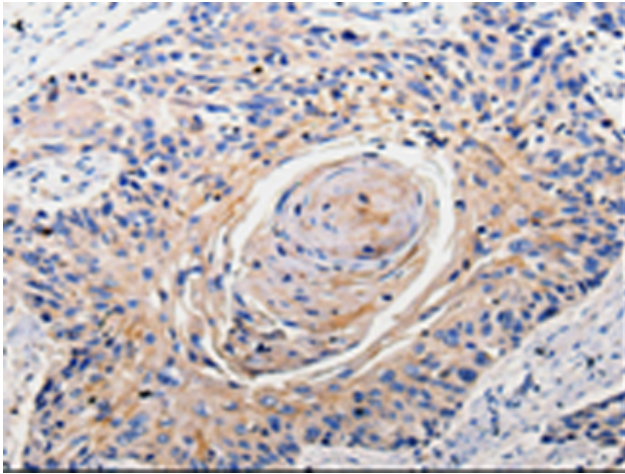
**Purification:** Antigen affinity purification

**Species Reactivity:** Human, Mouse

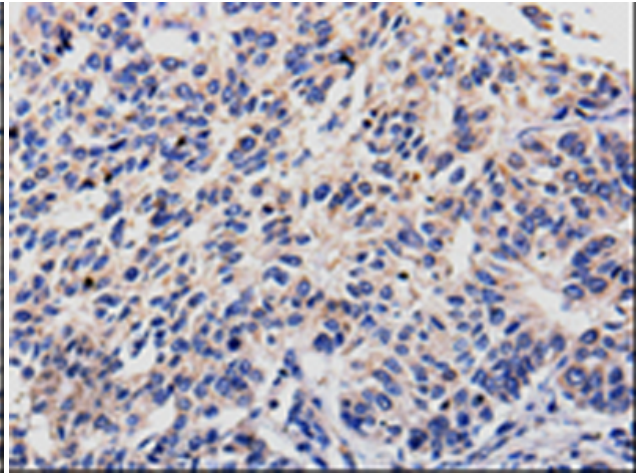
**Constituents:** PBS (without Mg<sup>2+</sup> and Ca<sup>2+</sup>), pH 7.4, 150 mM NaCl, 0.05% Sodium Azide and 40% glycerol

**Research Areas:** Signal Transduction

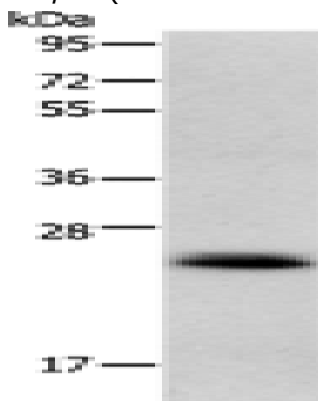
**Storage & Shipping:** Store at -20°C. Avoid repeated freezing and thawing



Immunohistochemistry analysis of paraffin-embedded Human esophagus cancer tissue using 219625(RAB22A Antibody) at a dilution of 1/100(Cell membrane, Cytoplasm).



Immunohistochemistry analysis of paraffin-embedded Human lung cancer tissue using 219625(Anti-RAB22A Antibody) at a dilution of 1/100.



Gel: 12%SDS-PAGE, Lysate: 40  $\mu$ g;  
Lane: Mouse heart tissue;  
Primary antibody: 219625(RAB22A Antibody) at dilution 1/300;  
Secondary antibody: Goat anti rabbit IgG at 1/8000 dilution;  
Exposure time: 10 seconds