

## RAB22A RABBIT MAB

**Cat.#:** N262793

**Product Name:** Anti-Rab22A Rabbit Monoclonal Antibody

**Synonyms:** Ras-related protein Rab-22A

**UNIPROT ID:** Q9UL26

**Background:** Plays a role in endocytosis and intracellular protein transport. Mediates trafficking of TF from early endosomes to recycling endosomes (PubMed:16537905). Required for NGF-mediated endocytosis of NTRK1, and subsequent neurite outgrowth (PubMed:21849477). Binds GTP and GDP and has low GTPase activity. Alternates between a GTP-bound active form and a GDP-bound inactive form (PubMed:16537905).

**Immunogen:** A synthetic peptide of human RAB22A

**Applications:** WB,IP

**Recommended Dilutions:** WB: 1/500-1/1000 IP: 1/20

**Host Species:** Rabbit

**Clonality:** Rabbit Monoclonal

**Clone ID:** R07-3A8

**MW:** Calculated MW: 22 kDa; Observed MW: 22 kDa

**Isotype:** IgG

**Purification:** Affinity Purified

**Species Reactivity:** Human,Mouse,Rat

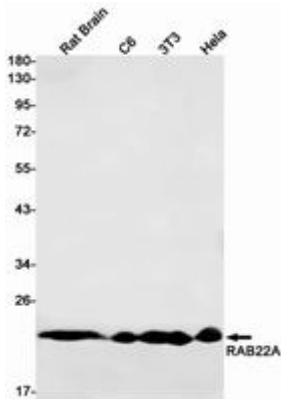
**Conjugation:** Unconjugated

**Modification:** Unmodified

**Constituents:** PBS (without Mg<sup>2+</sup> and Ca<sup>2+</sup>), pH 7.3 containing 50% glycerol, 0.5% BSA and 0.02% sodium azide

**Research Areas:** Signal Transduction

**Storage & Shipping:** Store at -20°C. Avoid repeated freezing and thawing



Western blot analysis of RAB22A in rat Brain, C6, 3T3, HeLa lysates using Rab22A antibody.