

## RAB18 RABBIT PAB

**Cat.#:** S219624

**Product Name:** Anti-RAB18 Rabbit Polyclonal Antibody

**Synonyms:** WARBM3, RAB18LI1

**UNIPROT ID:** Q9NP72 (Gene Accession - NP\_067075 )

**Background:** The protein encoded by this gene is a member of a family of Ras-related small GTPases that regulate membrane trafficking in organelles and transport vesicles. Knockdown studies in zebrafish suggest that this protein may have a role in eye and brain development. Mutations in this gene are associated with Warburg micro syndrome type 3. Alternatively spliced transcript variants have been found for this gene.

**Immunogen:** Synthetic peptide of human RAB18

**Applications:** ELISA, WB, IHC

**Recommended Dilutions:** IHC: 200-500;WB: 500-2000;ELISA: 2000-10000

**Host Species:** Rabbit

**Clonality:** Rabbit Polyclonal

**Isotype:** Immunogen-specific rabbit IgG

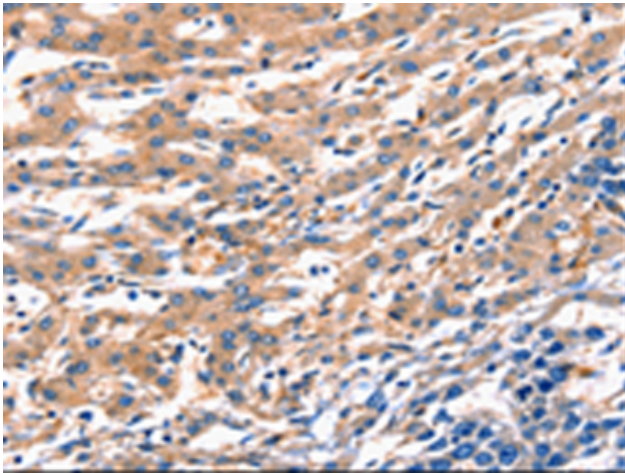
**Purification:** Antigen affinity purification

**Species Reactivity:** Human, Mouse, Rat

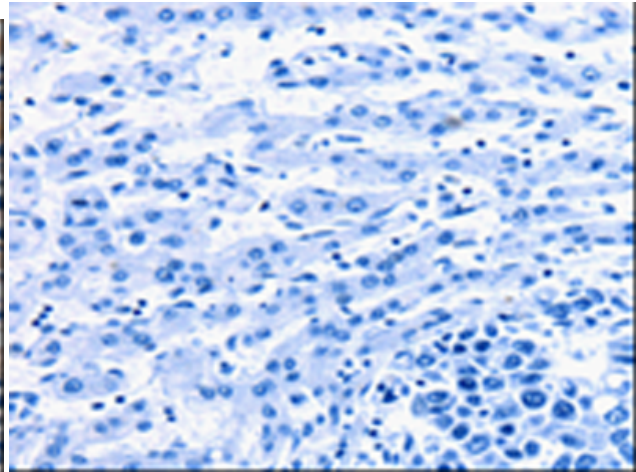
**Constituents:** PBS (without Mg<sup>2+</sup> and Ca<sup>2+</sup>), pH 7.4, 150 mM NaCl, 0.05% Sodium Azide and 40% glycerol

**Research Areas:** Signal Transduction

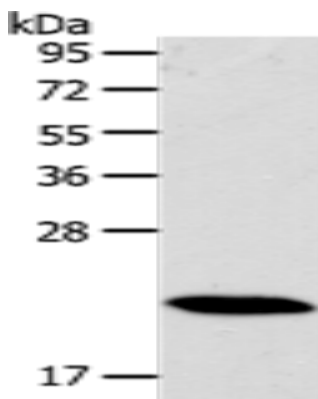
**Storage & Shipping:** Store at -20°C. Avoid repeated freezing and thawing



Immunohistochemistry analysis of paraffin embedded Human liver cancer tissue using 219624(RAB18 Antibody) at a dilution of 1/300(Cytoplasm).



In comparison with the IHC on the left, the same paraffin-embedded Human liver cancer tissue is first treated with the synthetic peptide and then with 219624(Anti-RAB18 Antibody) at dilution 1/300.



Gel: 10%SDS-PAGE, Lysate: 40 µg;  
Lane: Mouse heart tissue;  
Primary antibody: 219624(RAB18 Antibody) at dilution 1/400;  
Secondary antibody: Goat anti rabbit IgG at 1/8000 dilution;  
Exposure time: 1 second