

**RAB10 RABBIT MAB****Cat.#:** N262792**Product Name:** Anti-Rab10 Rabbit Monoclonal Antibody**Synonyms:** RAB10**UNIPROT ID:** P61026

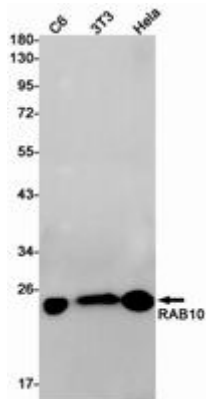
**Background:** The small GTPases Rab are key regulators of intracellular membrane trafficking, from the formation of transport vesicles to their fusion with membranes. Rabs cycle between an inactive GDP-bound form and an active GTP-bound form that is able to recruit to membranes different set of downstream effectors directly responsible for vesicle formation, movement, tethering and fusion. That Rab is mainly involved in the biosynthetic transport of proteins from the Golgi to the plasma membrane. Regulates, for instance, SLC2A4/GLUT4 glucose transporter-enriched vesicles delivery to the plasma membrane. In parallel, it regulates the transport of TLR4, a toll-like receptor to the plasma membrane and therefore may be important for innate immune response. Plays also a specific role in asymmetric protein transport to the plasma membrane within the polarized neuron and epithelial cells. In neurons, it is involved in axonogenesis through regulation of vesicular membrane trafficking toward the axonal plasma membrane while in epithelial cells, it regulates transport from the Golgi to the basolateral membrane. Moreover, may play a role in the basolateral recycling pathway and in phagosome maturation. According to PubMed:23263280, may play a role in endoplasmic reticulum dynamics and morphology controlling tubulation along microtubules and tubules fusion.

**Immunogen:** Recombinant protein of human RAB10**Applications:** WB, ICC/IF, IP**Recommended Dilutions:** WB: 1/500-1/1000 IF: 1/50-1/200 IP: 1/20**Host Species:** Rabbit**Clonality:** Rabbit Monoclonal**Clone ID:** R06-2A3**MW:** Calculated MW: 23 kDa; Observed MW: 23 kDa**Isotype:** IgG**Purification:** Affinity Purified**Species Reactivity:** Human, Mouse, Rat**Conjugation:** Unconjugated**Modification:** Unmodified

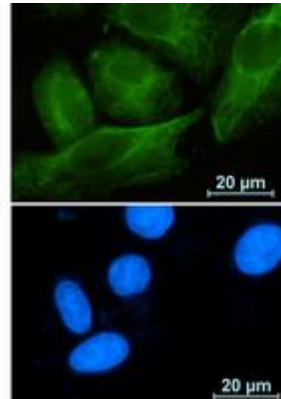
**Constituents:** PBS (without Mg<sup>2+</sup> and Ca<sup>2+</sup>), pH 7.3 containing 50% glycerol, 0.5% BSA and 0.02% sodium azide

**Research Areas:** Signal Transduction

**Storage & Shipping:** Store at -20°C. Avoid repeated freezing and thawing



Western blot analysis of RAB10 in C6, 3T3, HeLa lysates using RAB10 antibody.



Immunocytochemistry analysis of Rab10 (green) in A549 using Rab10 antibody, and DAPI (blue).