

## QSOX1 RABBIT PAB

**Cat.#:** S217727

**Product Name:** Anti-QSOX1 Rabbit Polyclonal Antibody

**Synonyms:** Q6; QSCN6

**UNIPROT ID:** O00391 (Gene Accession - BC017692 )

**Background:** This gene encodes a protein that contains domains of thioredoxin and ERV1, members of two long-standing gene families. The gene expression is induced as fibroblasts begin to exit the proliferative cycle and enter quiescence, suggesting that this gene plays an important role in growth regulation. Two transcript variants encoding two different isoforms have been found for this gene.

**Immunogen:** Fusion protein of human QSOX1

**Applications:** ELISA, WB, IHC

**Recommended Dilutions:** IHC: 25-100;WB: 200-1000;ELISA: 5000-10000

**Host Species:** Rabbit

**Clonality:** Rabbit Polyclonal

**Isotype:** Immunogen-specific rabbit IgG

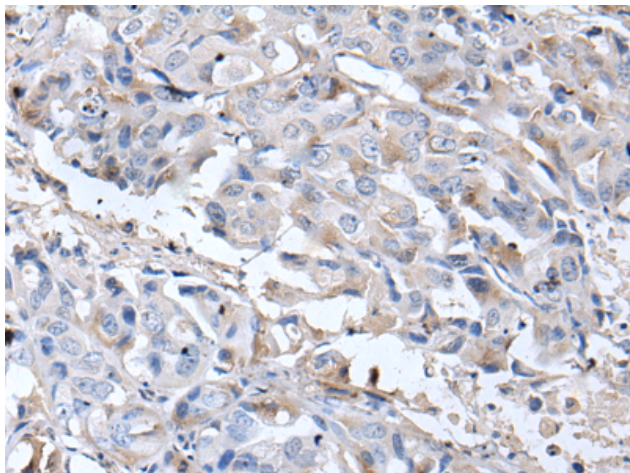
**Purification:** Antigen affinity purification

**Species Reactivity:** Human

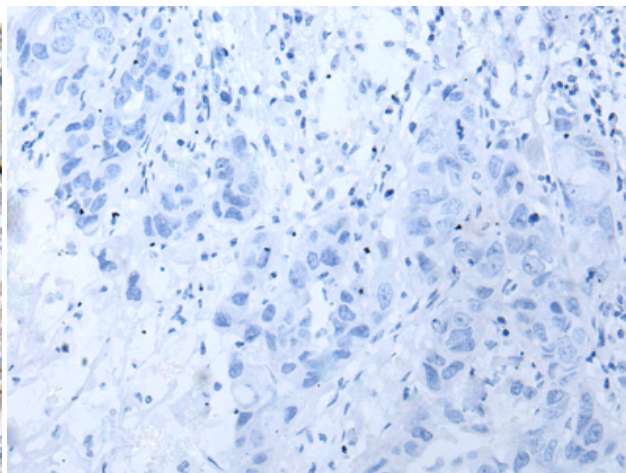
**Constituents:** PBS (without Mg<sup>2+</sup> and Ca<sup>2+</sup>), pH 7.4, 150 mM NaCl, 0.05% Sodium Azide and 40% glycerol

**Research Areas:** Cancer

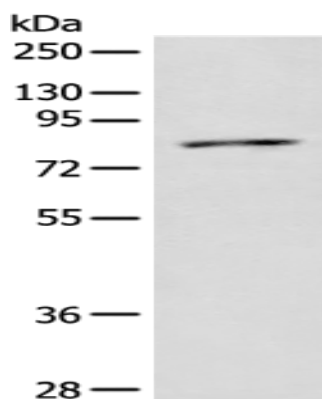
**Storage & Shipping:** Store at -20°C. Avoid repeated freezing and thawing



Immunohistochemistry analysis of paraffin embedded Human breast cancer tissue using 217727(QSOX1 Antibody) at a dilution of 1/30(Cytoplasm and Cell membrane).



In comparison with the IHC on the left, the same paraffin-embedded Human breast cancer tissue is first treated with the fusion protein and then with 217727(Anti-QSOX1 Antibody) at dilution 1/30.



Gel: 8%SDS-PAGE, Lysate: 40  $\mu$ g;  
Lane: Human placenta tissue lysate;  
Primary antibody: 217727(QSOX1 Antibody) at dilution 1/250;  
Secondary antibody: Goat anti rabbit IgG at 1/8000 dilution;  
Exposure time: 30 seconds