

## PYRUVATE DEHYDROGENASE E1 ALPHA RABBIT MAB

**Cat.#:** N262790

**Product Name:** Anti-Pyruvate Dehydrogenase E1 alpha Rabbit Monoclonal Antibody

**Synonyms:** mitochondrial; ODP<sub>A</sub>\_HUMAN; PDH; PDHA; PDHA1; PDHCE1A; PDHE1 A type I; PDHE1-A type I; PHE1A; Pyruvate Dehydrogenase (lipoamide) alpha 1; Pyruvate dehydrogenase complex; E1 alpha polypeptide 1; Pyruvate Dehydrogenase E1 alpha; Pyruvate dehydrogenase E1 component subunit alpha; Pyruvate dehydrogenase E1 component subunit alpha; somatic form; mitochondrial; somatic form.

**UNIPROT ID:** P08559

**Background:** The PDH complex is composed of multiple copies of three enzymatic components: pyruvate dehydrogenase (E1), dihydrolipoamide acetyltransferase (E2) and lipoamide dehydrogenase (E3). Catalyzes the removal of CO<sub>2</sub> from pyruvate. Mutations in the  $\alpha$  subunits of pyruvate dehydrogenase (E1) lead to congenital defects that are usually associated with lactic acidosis, neurodegeneration and early death.

**Immunogen:** A synthetic peptide of human Pyruvate Dehydrogenase E1-alpha subunit

**Applications:** WB, ICC/IF, IP

**Recommended Dilutions:** WB: 1/500-1/1000 IF: 1/50-1/200 IP: 1/20

**Host Species:** Rabbit

**Clonality:** Rabbit Monoclonal

**Clone ID:** R06-1J4

**MW:** Calculated MW: 43 kDa; Observed MW: 43 kDa

**Isotype:** IgG

**Purification:** Affinity Purified

**Species Reactivity:** Human, Mouse, Rat

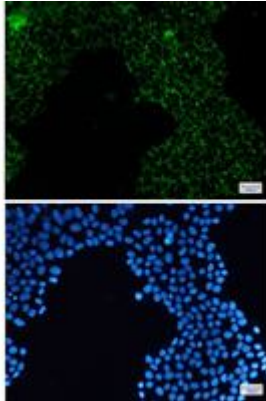
**Conjugation:** Unconjugated

**Modification:** Unmodified

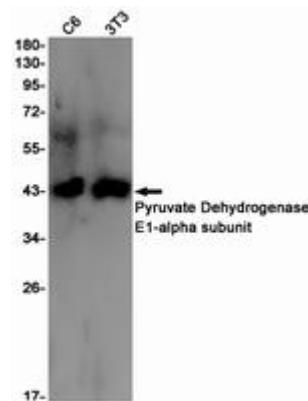
**Constituents:** PBS (without Mg<sup>2+</sup> and Ca<sup>2+</sup>), pH 7.3 containing 50% glycerol, 0.5% BSA and 0.02% sodium azide

**Research Areas:** Signal Transduction

**Storage & Shipping:** Store at -20°C. Avoid repeated freezing and thawing



Immunocytochemistry analysis of Pyruvate Dehydrogenase E1alpha subunit (green) in Hela using Pyruvate Dehydrogenase E1alpha subunit antibody, and DAPI (blue)



Western blot analysis of Pyruvate Dehydrogenase E1alpha subunit in C6, 3T3 lysates using Pyruvate Dehydrogenase E1 alpha antibody.