

PYROPHOSPHATASE 1 RABBIT MAB

Cat.#: N262789

Product Name: Anti-Pyrophosphatase 1 Rabbit Monoclonal Antibody

Synonyms: PP; PPI; IOPPP; HEL-S-66p; SID6-8061

UNIPROT ID: Q15181

Background: The protein encoded by this gene is a member of the inorganic pyrophosphatase (PPase) family. PPases catalyze the hydrolysis of pyrophosphate to inorganic phosphate, which is important for the phosphate metabolism of cells. Studies of a similar protein in bovine suggested a cytoplasmic localization of this enzyme.

Immunogen: A synthetic peptide of human Pyrophosphatase 1

Applications: WB,IP

Recommended Dilutions: WB: 1/500-1/1000 IP: 1/20

Host Species: Rabbit

Clonality: Rabbit Monoclonal

Clone ID: R01-3E6

MW: Calculated MW: 33 kDa; Observed MW: 33 kDa

Isotype: IgG

Purification: Affinity Purified

Species Reactivity: Human,Mouse

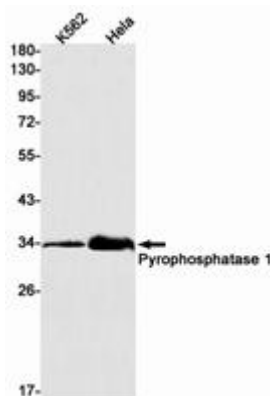
Conjugation: Unconjugated

Modification: Unmodified

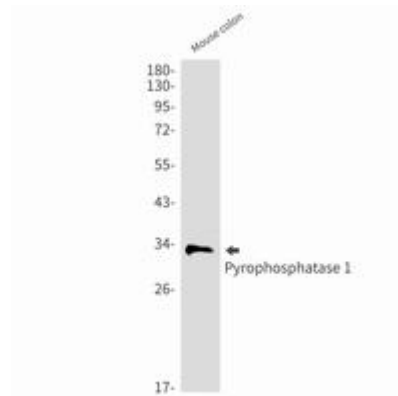
Constituents: PBS (without Mg²⁺ and Ca²⁺), pH 7.3 containing 50% glycerol, 0.5% BSA and 0.02% sodium azide

Research Areas: Signal Transduction

Storage & Shipping: Store at -20°C. Avoid repeated freezing and thawing



Western blot analysis of Pyrophosphatase 1 in K562, HeLa lysates using Pyrophosphatase 1 antibody.



Western blot analysis of Pyrophosphatase 1 in mouse colon lysates using Pyrophosphatase 1 antibody.