

## PYM1 RABBIT PAB

**Cat.#:** S215310

**Product Name:** Anti-PYM1 Rabbit Polyclonal Antibody

**Synonyms:** PYM; WIBG

**UNIPROT ID:** Q9BRP8 (Gene Accession - NP\_115721 )

**Background:** Enables ribosome binding activity. Involved in exon-exon junction complex disassembly; nuclear-transcribed mRNA catabolic process, nonsense-mediated decay; and positive regulation of translation. Located in cell junction; cytosol; and nuclear lumen. Part of exon-exon junction complex. [provided by Alliance of Genome Resources, Apr 2022]

**Immunogen:** Synthetic peptide of human PYM1

**Applications:** ELISA, IHC

**Recommended Dilutions:** IHC: 50-100; ELISA: 5000-10000

**Host Species:** Rabbit

**Clonality:** Rabbit Polyclonal

**Isotype:** Immunogen-specific rabbit IgG

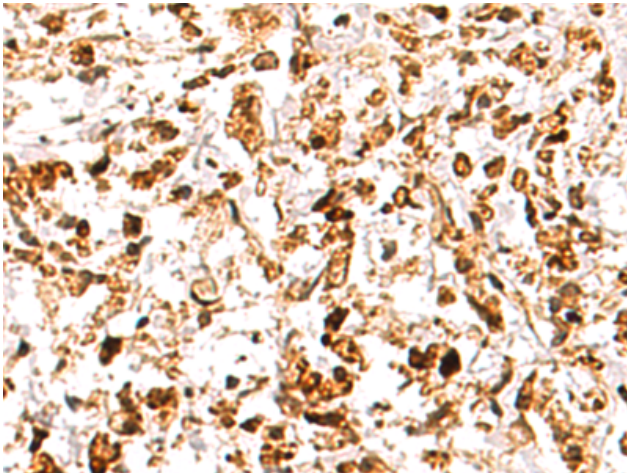
**Purification:** Antigen affinity purification

**Species Reactivity:** Human, Mouse

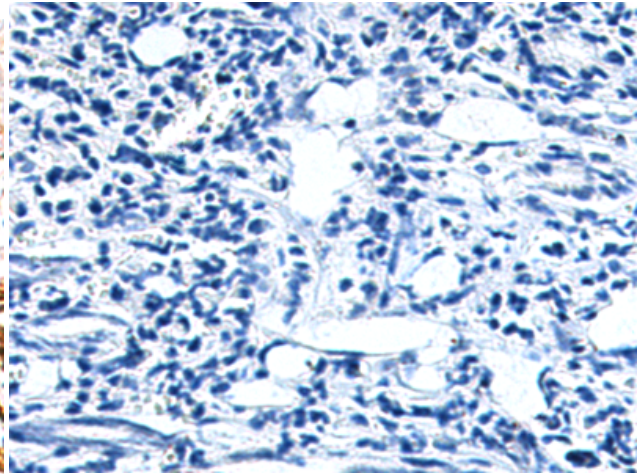
**Constituents:** PBS (without Mg<sup>2+</sup> and Ca<sup>2+</sup>), pH 7.4, 150 mM NaCl, 0.05% Sodium Azide and 40% glycerol

**Research Areas:** Epigenetics and Nuclear Signaling

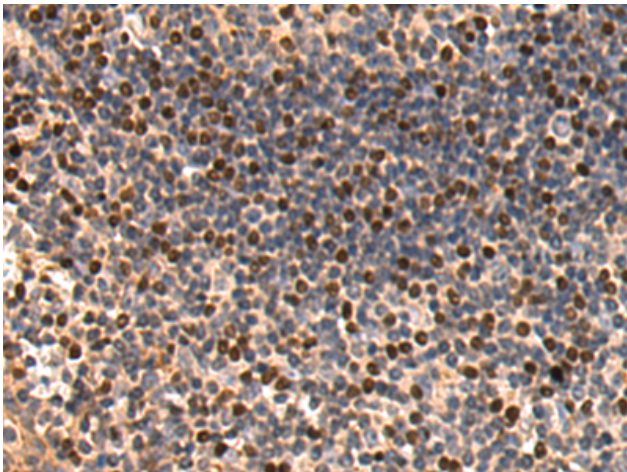
**Storage & Shipping:** Store at -20°C. Avoid repeated freezing and thawing



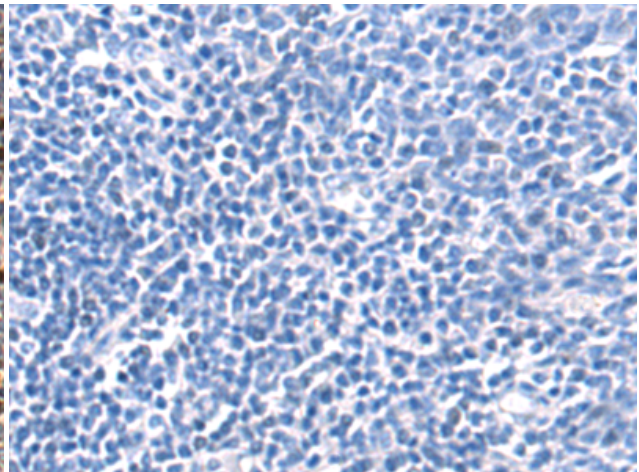
Immunohistochemistry analysis of paraffin embedded Human gastric cancer tissue using 215310(PYMI Antibody) at a dilution of 1/30(Cytoplasm and Nucleus).



In comparison with the IHC on the left, the same paraffin-embedded Human gastric cancer tissue is first treated with the synthetic peptide and then with 215310(Anti-PYMI Antibody) at dilution 1/30.



The image on the left is immunohistochemistry of paraffin-embedded Human tonsil tissue using 215310(Anti-PYMI Antibody) at a dilution of 1/30.



In comparison with the IHC on the left, the same paraffin-embedded Human tonsil tissue is first treated with synthetic peptide and then with D163193(Anti-PYMI Antibody) at dilution 1/30.