

## PTBP1 RABBIT MAB

**Cat.#:** N263512

**Product Name:** Anti-PTBP1 Rabbit Monoclonal Antibody

**Synonyms:** PTB; PTB2; PTB3; PTB4; pPTB; HNRPI; PTB-1; PTB-T; HNRNPI; HNRNP-1

**UNIPROT ID:** P26599

**Background:** Plays a role in pre-mRNA splicing and in the regulation of alternative splicing events. Binds to the polypyrimidine tract of introns. May promote RNA looping when bound to two separate polypyrimidine tracts in the same pre-mRNA.

**Immunogen:** A synthetic peptide of human PTBP1

**Applications:** WB,IHC-P

**Recommended Dilutions:** WB: 1/500-1/1000 IHC: 1/50-1/100

**Host Species:** Rabbit

**Clonality:** Rabbit Monoclonal

**Clone ID:** R01-1G2

**MW:** Calculated MW: 57 kDa; Observed MW: 57 kDa

**Isotype:** IgG

**Purification:** Affinity Purified

**Species Reactivity:** Human,Mouse,Hamster

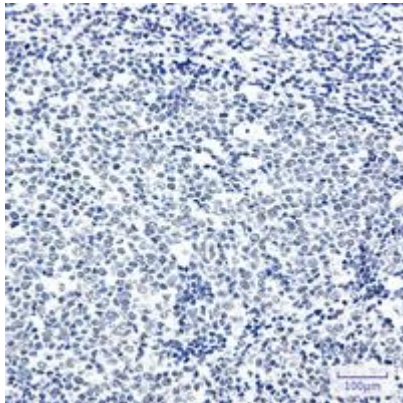
**Conjugation:** Unconjugated

**Modification:** Unmodified

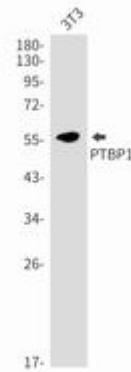
**Constituents:** PBS (without Mg<sup>2+</sup> and Ca<sup>2+</sup>), pH 7.3 containing 50% glycerol, 0.5% BSA and 0.02% sodium azide

**Research Areas:** Epigenetics and Nuclear Signaling

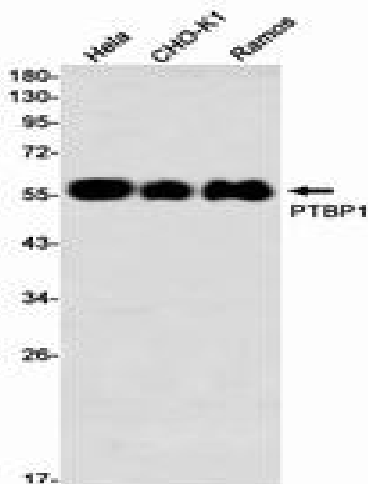
**Storage & Shipping:** Store at -20°C. Avoid repeated freezing and thawing



Immunohistochemistry analysis of paraffin-embedded Human tonsil using PTBP1 antibody. High-pressure and temperature Sodium Citrate pH 6.0 was used for antigen retrieval.



Western blot analysis of PTBP1 in Sodium 3T3 lysates using PTBP1 antibody.



Western blot analysis of PTBP1 in HeLa, CHO-K1, Ramos lysates using PTBP1 antibody.