

## PSS2 RABBIT MAB

**Cat.#:** N262780

**Product Name:** Anti-PSS2 Rabbit Monoclonal Antibody

**Synonyms:** PSS2

**UNIPROT ID:** Q9BVG9

**Background:** Catalyzes a base-exchange reaction in which the polar head group of phosphatidylethanolamine (PE) or phosphatidylcholine (PC) is replaced by L-serine. PTDSS2 is specific for phosphatidylethanolamine and does not act on phosphatidylcholine.

**Immunogen:** Recombinant protein of human PTDSS2

**Applications:** WB,IP

**Recommended Dilutions:** WB: 1/500-1/1000 IP: 1/20

**Host Species:** Rabbit

**Clonality:** Rabbit Monoclonal

**Clone ID:** R07-9G9

**MW:** Calculated MW: 56 kDa; Observed MW: 56 kDa

**Isotype:** IgG

**Purification:** Affinity Purified

**Species Reactivity:** Human

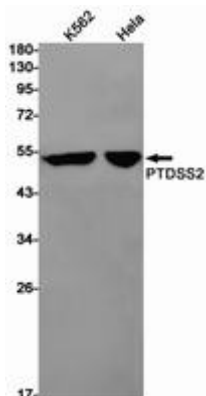
**Conjugation:** Unconjugated

**Modification:** Unmodified

**Constituents:** PBS (without Mg<sup>2+</sup> and Ca<sup>2+</sup>), pH 7.3 containing 50% glycerol, 0.5% BSA and 0.02% sodium azide

**Research Areas:** Signal Transduction

**Storage & Shipping:** Store at -20°C. Avoid repeated freezing and thawing



Western blot analysis of PTDSS2 in K562, HeLa lysates using PSS2 antibody.



# Product Description

Pioneering GTPase and Oncogene Product Development since 2010

---