

## PSMD6 RABBIT PAB

**Cat.#:** S220181

**Product Name:** Anti-PSMD6 Rabbit Polyclonal Antibody

**Synonyms:** S10, Rpn7, p42A, p44S10, SGA-113M

**UNIPROT ID:** Q15008 (Gene Accession - NP\_055629 )

**Background:** This gene encodes a member of the protease subunit S10 family. The encoded protein is a subunit of the 26S proteasome which colocalizes with DNA damage foci and is involved in the ATP-dependent degradation of ubiquitinated proteins. Alternative splicing results in multiple transcript variants.

**Immunogen:** Synthetic peptide of human PSMD6

**Applications:** ELISA, WB, IHC

**Recommended Dilutions:** IHC: 50-200;WB: 500-2000;ELISA: 2000-10000

**Host Species:** Rabbit

**Clonality:** Rabbit Polyclonal

**Isotype:** Immunogen-specific rabbit IgG

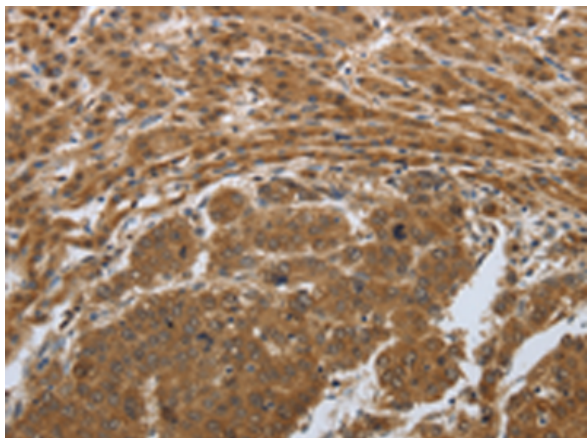
**Purification:** Antigen affinity purification

**Species Reactivity:** Human, Mouse

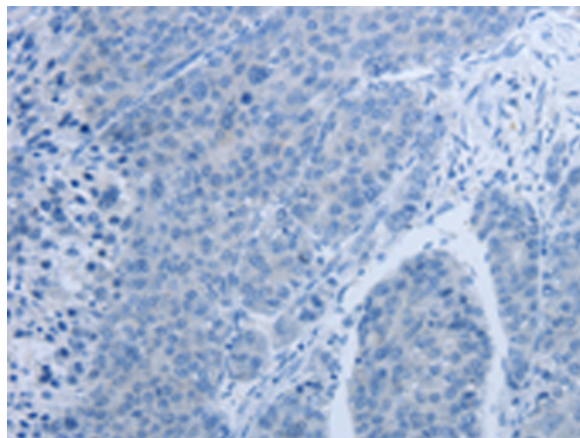
**Constituents:** PBS (without Mg<sup>2+</sup> and Ca<sup>2+</sup>), pH 7.4, 150 mM NaCl, 0.05% Sodium Azide and 40% glycerol

**Research Areas:** Cell Biology

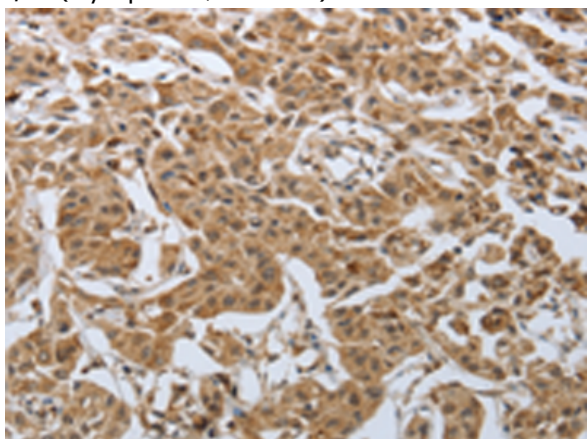
**Storage & Shipping:** Store at -20°C. Avoid repeated freezing and thawing



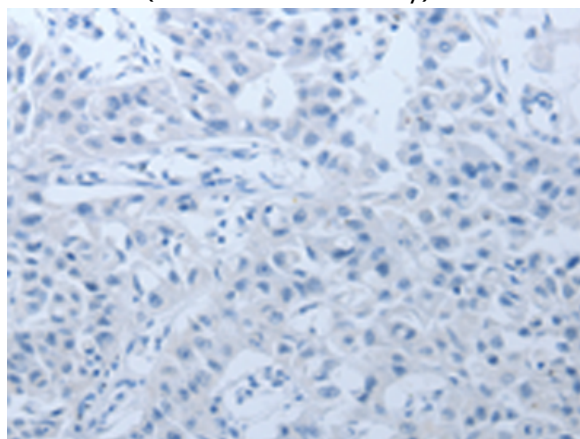
Immunohistochemistry analysis of paraffin embedded Human liver cancer tissue using 220181(PSMD6 Antibody) at a dilution of 1/50(Cytoplasm, Nucleus).



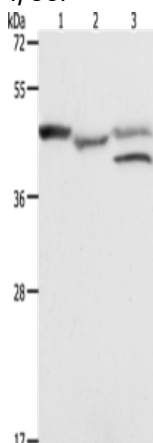
In comparison with the IHC on the left, the same paraffin-embedded Human liver cancer tissue is first treated with the synthetic peptide and then with 220181(Anti-PSMD6 Antibody) at dilution 1/50.



The image on the left is immunohistochemistry of paraffin-embedded Human lung cancer tissue using 220181(Anti-PSMD6 Antibody) at a dilution of 1/50.



In comparison with the IHC on the left, the same paraffin-embedded Human lung cancer tissue is first treated with synthetic peptide and then with D261093(Anti-PSMD6 Antibody) at dilution 1/50.



Gel: 10%SDS-PAGE, Lysate: 40 µg;  
Lane 1-3: K562 cells, mouse heart tissue, MCF7 cells;  
Primary antibody: 220181(PSMD6 Antibody) at dilution 1/900;  
Secondary antibody: Goat anti rabbit IgG at 1/8000 dilution;  
Exposure time: 1 minute



# Product Description

Pioneering GTPase and Oncogene Product Development since 2010

---