

## PSMD3 RABBIT PAB

**Cat.#:** S216751

**Product Name:** Anti-PSMD3 Rabbit Polyclonal Antibody

**Synonyms:** S3; P58; RPN3; TSTA2

**UNIPROT ID:** O43242 (Gene Accession - BC012302)

**Background:** The 26S proteasome is a multicatalytic proteinase complex with a highly ordered structure composed of 2 complexes, a 20S core and a 19S regulator. The 20S core is composed of 4 rings of 28 non-identical subunits; 2 rings are composed of 7 alpha subunits and 2 rings are composed of 7 beta subunits. The 19S regulator is composed of a base, which contains 6 ATPase subunits and 2 non-ATPase subunits, and a lid, which contains up to 10 non-ATPase subunits. Proteasomes are distributed throughout eukaryotic cells at a high concentration and cleave peptides in an ATP/ubiquitin-dependent process in a non-lysosomal pathway. This gene encodes a member of the proteasome subunit S3 family that functions as one of the non-ATPase subunits of the 19S regulator lid. Single nucleotide polymorphisms in this gene are associated with neutrophil count.

**Immunogen:** Fusion protein of human PSMD3

**Applications:** ELISA, WB, IHC

**Recommended Dilutions:** IHC: 25-100;WB: 200-1000;ELISA: 2000-5000

**Host Species:** Rabbit

**Clonality:** Rabbit Polyclonal

**Isotype:** Immunogen-specific rabbit IgG

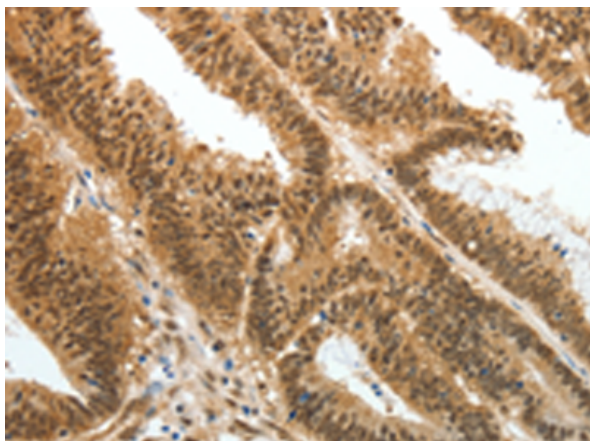
**Purification:** Antigen affinity purification

**Species Reactivity:** Human, Mouse

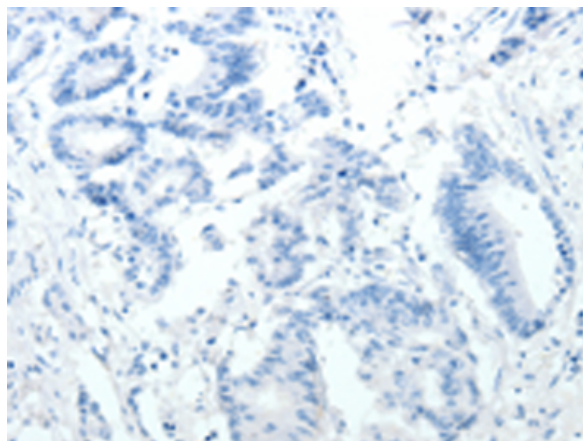
**Constituents:** PBS (without Mg<sup>2+</sup> and Ca<sup>2+</sup>), pH 7.4, 150 mM NaCl, 0.05% Sodium Azide and 40% glycerol

**Research Areas:** Cell Biology

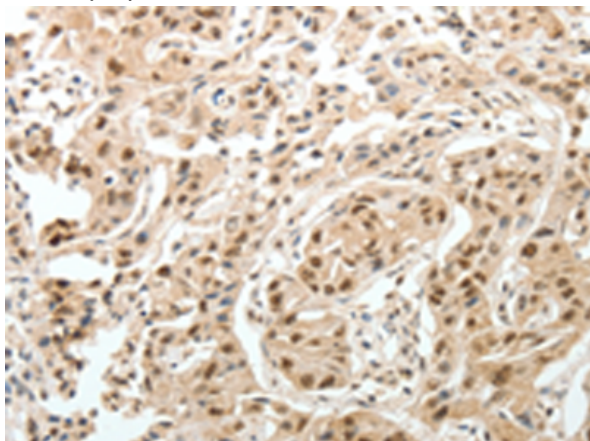
**Storage & Shipping:** Store at -20°C. Avoid repeated freezing and thawing



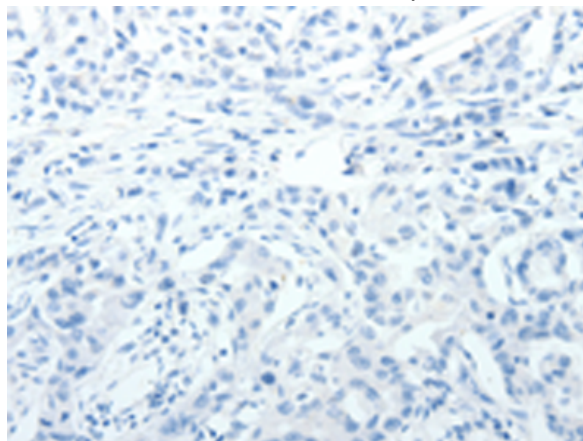
Immunohistochemistry analysis of paraffin embedded Human colon cancer tissue using 216751(PSMD3 Antibody) at a dilution of 1/25(Cytoplasm, Nucleus).



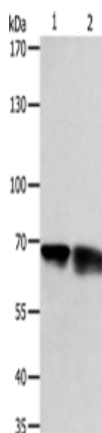
In comparison with the IHC on the left, the same paraffin-embedded Human colon cancer tissue is first treated with the fusion protein and then with 216751(Anti-PSMD3 Antibody) at dilution 1/25.



The image on the left is immunohistochemistry of paraffin-embedded Human lung cancer tissue using 216751(Anti-PSMD3 Antibody) at a dilution of 1/25.



In comparison with the IHC on the left, the same paraffin-embedded Human lung cancer tissue is first treated with fusion protein and then with D221175(Anti-PSMD3 Antibody) at dilution 1/25.



Gel: 10%SDS-PAGE, Lysate: 50 µg;  
Lane 1-2: NIH/3T3 cells, human fetal kidney tissue;  
Primary antibody: 216751(PSMD3 Antibody) at dilution 1/300;  
Secondary antibody: Goat anti rabbit IgG at 1/8000 dilution;  
Exposure time: 1 minute



# Product Description

Pioneering GTPase and Oncogene Product Development since 2010

---