

## PSMB8 RABBIT PAB

**Cat.#:** S220678

**Product Name:** Anti-PSMB8 Rabbit Polyclonal Antibody

**Synonyms:** JMP; ALDD; LMP7; NKJO; D6S216; PSMB5i; RING10; D6S216E

**UNIPROT ID:** P28062 (Gene Accession - NP\_004150 )

**Background:** The proteasome is a multicatalytic proteinase complex with a highly ordered ring-shaped 20S core structure. The core structure is composed of 4 rings of 28 non-identical subunits; 2 rings are composed of 7 alpha subunits and 2 rings are composed of 7 beta subunits. Proteasomes are distributed throughout eukaryotic cells at a high concentration and cleave peptides in an ATP/ubiquitin-dependent process in a non-lysosomal pathway.

**Immunogen:** Synthetic peptide of human PSMB8

**Applications:** ELISA, WB, IHC

**Recommended Dilutions:** IHC: 25-100;WB: 200-1000;ELISA: 1000-2000

**Host Species:** Rabbit

**Clonality:** Rabbit Polyclonal

**Isotype:** Immunogen-specific rabbit IgG

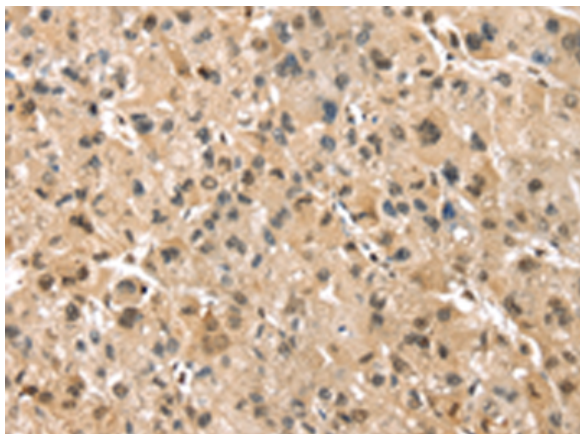
**Purification:** Antigen affinity purification

**Species Reactivity:** Human, Mouse

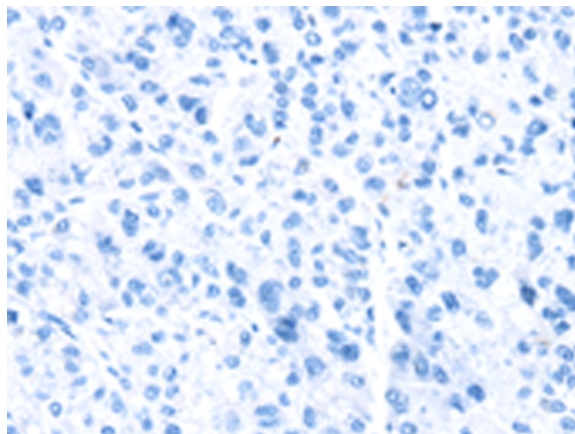
**Constituents:** PBS (without Mg<sup>2+</sup> and Ca<sup>2+</sup>), pH 7.4, 150 mM NaCl, 0.05% Sodium Azide and 40% glycerol

**Research Areas:** Cell Biology

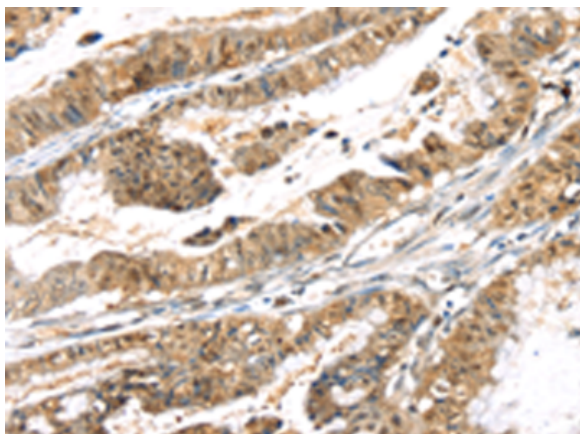
**Storage & Shipping:** Store at -20°C. Avoid repeated freezing and thawing



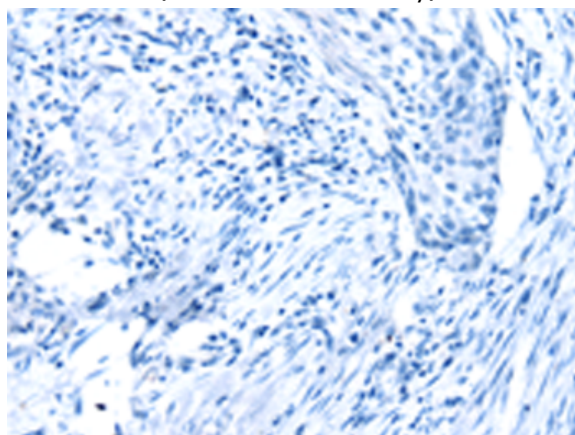
Immunohistochemistry analysis of paraffin embedded Human liver cancer tissue using 220678(PSMB8 Antibody) at a dilution of 1/30(Cytoplasm and Nucleus).



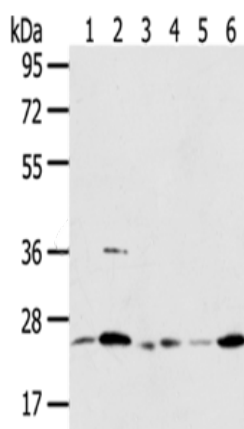
In comparison with the IHC on the left, the same paraffin-embedded Human liver cancer tissue is first treated with the synthetic peptide and then with 220678(Anti-PSMB8 Antibody) at dilution 1/30.



The image on the left is immunohistochemistry of paraffin-embedded Human esophagus cancer tissue using 220678(Anti-PSMB8 Antibody) at a dilution of 1/30.



In comparison with the IHC on the left, the same paraffin-embedded Human esophagus cancer tissue is first treated with synthetic peptide and then with D261863(Anti-PSMB8 Antibody) at dilution 1/30.



Gel: 8%SDS-PAGE, Lysate: 40 µg;  
 Lane 1-6: 231 cells, A431 cells, Mouse liver tissue, Human placenta tissue, Jurkat cells, Raji cells;  
 Primary antibody: 220678(PSMB8 Antibody) at dilution 1/350;  
 Secondary antibody: Goat anti rabbit IgG at 1/8000 dilution;  
 Exposure time: 10 seconds



# Product Description

Pioneering GTPase and Oncogene Product Development since 2010

---