

## PSMB2 RABBIT PAB

**Cat.#:** S219007

**Product Name:** Anti-PSMB2 Rabbit Polyclonal Antibody

**Synonyms:** HC7-I

**UNIPROT ID:** P49721 (Gene Accession - BC000268 )

**Background:** The proteasome is a multicatalytic proteinase complex with a highly ordered ring-shaped 20S core structure. The core structure is composed of 4 rings of 28 non-identical subunits; 2 rings are composed of 7 alpha subunits and 2 rings are composed of 7 beta subunits. Proteasomes are distributed throughout eukaryotic cells at a high concentration and cleave peptides in an ATP/ubiquitin-dependent process in a non-lysosomal pathway. An essential function of a modified proteasome, the immunoproteasome, is the processing of class I MHC peptides. This gene encodes a member of the proteasome B-type family, also known as the T1B family, that is a 20S core beta subunit. Multiple alternatively spliced transcript variants encoding distinct isoforms have been found for this gene.

**Immunogen:** Fusion protein of human PSMB2

**Applications:** ELISA, WB, IHC

**Recommended Dilutions:** IHC: 100-300;WB: 1000-5000;ELISA: 5000-10000

**Host Species:** Rabbit

**Clonality:** Rabbit Polyclonal

**Isotype:** Immunogen-specific rabbit IgG

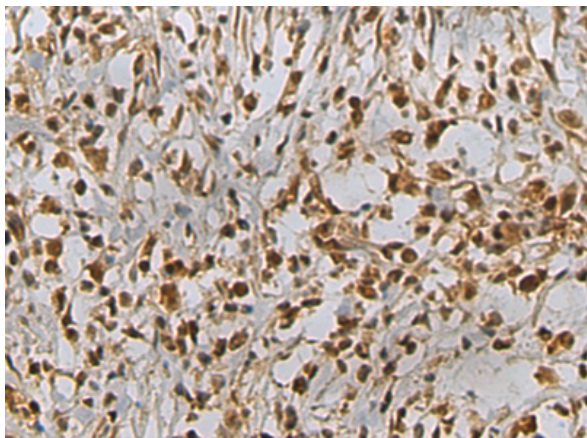
**Purification:** Antigen affinity purification

**Species Reactivity:** Human, Mouse, Rat

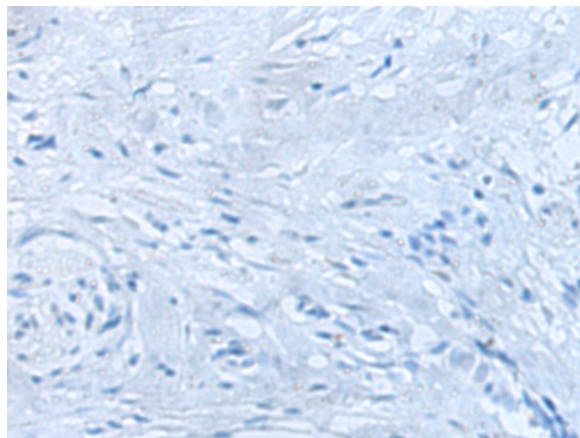
**Constituents:** PBS (without Mg<sup>2+</sup> and Ca<sup>2+</sup>), pH 7.4, 150 mM NaCl, 0.05% Sodium Azide and 40% glycerol

**Research Areas:** Cell Biology

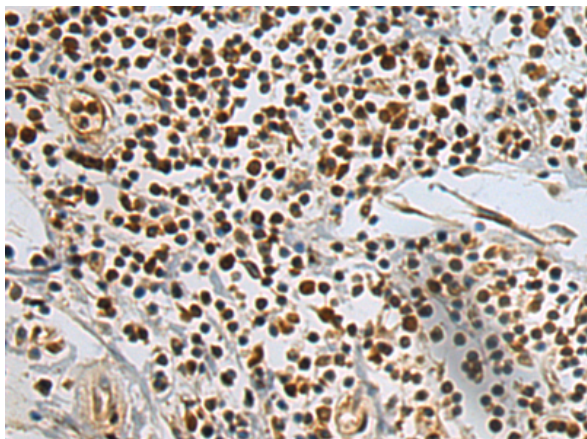
**Storage & Shipping:** Store at -20°C. Avoid repeated freezing and thawing



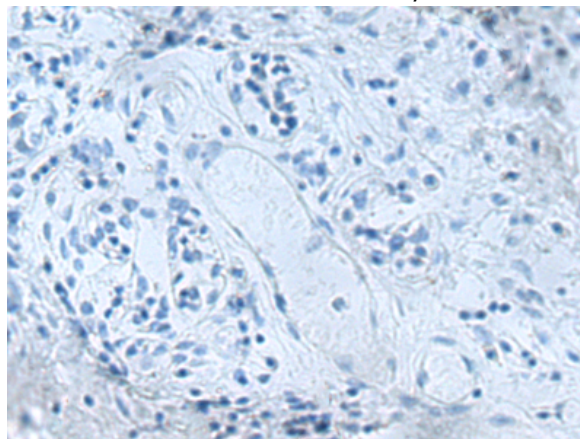
Immunohistochemistry analysis of paraffin embedded Human gastric cancer tissue using 219007(PSMB2 Antibody) at a dilution of 1/130(Nucleus).



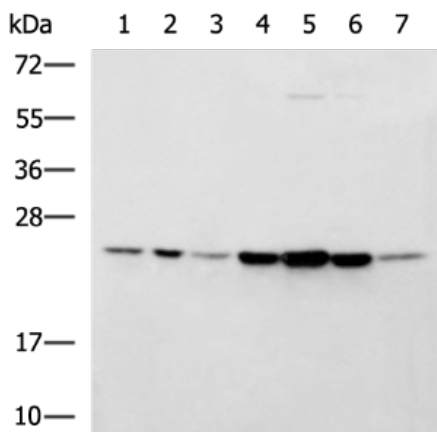
In comparison with the IHC on the left, the same paraffin-embedded Human gastric cancer tissue is first treated with the fusion protein and then with 219007(Anti-PSMB2 Antibody) at dilution 1/130.



The image on the left is immunohistochemistry of paraffin-embedded Human breast cancer tissue using 219007(Anti-PSMB2 Antibody) at a dilution of 1/130.



In comparison with the IHC on the left, the same paraffin-embedded Human breast cancer tissue is first treated with fusion protein and then with D225640(Anti-PSMB2 Antibody) at dilution 1/130.



Gel: 12%SDS-PAGE, Lysate: 40 µg;  
 Lane 1-7: 293T, Jurkat, HT29, K562, LOVO, HeLa and HepG2 cell lysates;  
 Primary antibody: 219007(PSMB2 Antibody) at dilution 1/1000;  
 Secondary antibody: HRP-conjugated Goat anti rabbit IgG at 1/5000 dilution;  
 Exposure time: 20 seconds



# Product Description

Pioneering GTPase and Oncogene Product Development since 2010

---